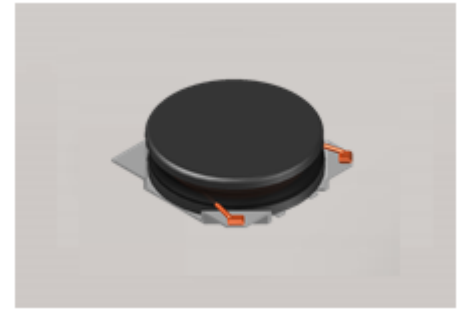


# CMI-CDOP201610NF-SERIES



## Features

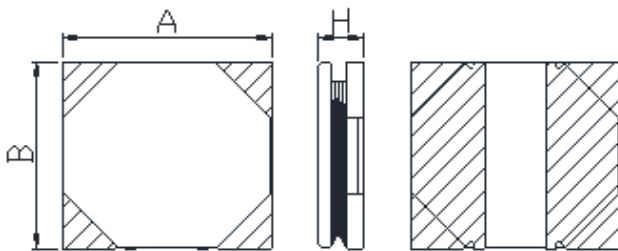
- ▶ High current and low profile.
- ▶ Available tape and reel for auto insertion
- ▶ Simple and Shield structure.



## Applications

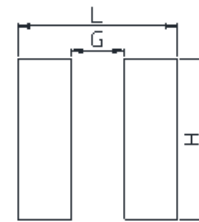
- ▶ Equipment using for automotive  
(ECM, airbags, headlights, electronic powder steering, motors, ABS, other)

### Dimension (Unit:mm)



A	B	H
2.0±0.2	1.6±0.2	1.0Max

### Land Pattern (Unit:mm)



L	G	H
2.2	0.4	1.8

## Specifications

Part Number	Inductance (uH)	Tolerance (±)	DCR(mΩ) ±20%	IDC1(A) Max.	IDC2(A) Max.	Test Frequency (Hz)
CMI-CDOP201610NF-R47N	0.47	30%	45	3.00	2.60	1M
CMI-CDOP201610NF-1R0N	1.0	30%	100	1.90	1.80	1M
CMI-CDOP201610NF-2R2N	2.2	30%	190	1.30	1.20	1M
CMI-CDOP201610NF-3R3N	3.3	30%	290	1.00	1.00	1M
CMI-CDOP201610NF-4R7N	4.7	30%	450	0.87	0.74	1M

- IDC1: When based on the inductance change rate (approximately 30% below in the initial value)
- IDC2: When based on the temperature increase (Temperature increase of approximately 40°C by self heating)
- Operating Temperature Range(including self temperature) : -40°C ~ +105 °C

Ilsan Sales Office (KOREA) +82)31-904-1444  
 H.K Sales Office (HONGKONG) +852)2711-5551  
 Shenzhen Sales Office (CHINA) +86)755-8663-6929  
 LA Sales Office (USA) +1)866-446-3586  
 Hungary Sales office (EUROPE) +36)30-913-7706

[coilmaster@coilmaster.com](mailto:coilmaster@coilmaster.com)  
[coilmaster@coilmaster.com](mailto:coilmaster@coilmaster.com)  
[coilmaster@coilmaster.com](mailto:coilmaster@coilmaster.com)  
[coilmaster@coilmaster.com](mailto:coilmaster@coilmaster.com)  
[coilmaster@coilmaster.com](mailto:coilmaster@coilmaster.com)

- All specifications are subject to change without notice.
- Update date : 2018.04.11