

CMI-CDOP201612NF-SERIES

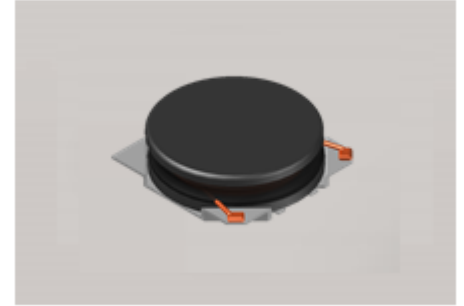


Features

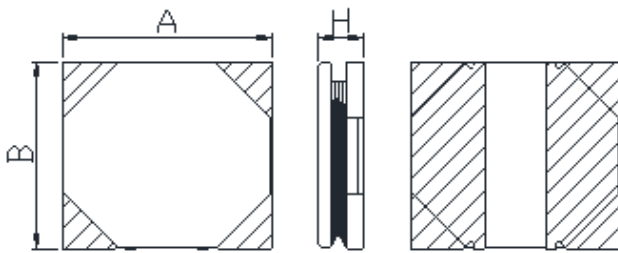
- ▶ High current and low profile.
- ▶ Available tape and reel for auto insertion
- ▶ Simple and Shield structure.

Applications

- ▶ Equipment using for automotive
(ECM, airbags, headlights, electronic powder steering, motors, ABS, other)

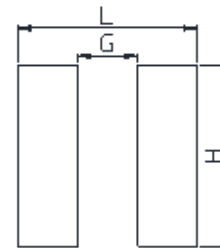


Dimension (Unit:mm)



A	B	H
2.0±0.2	1.6±0.2	1.2Max

Land Pattern (Unit:mm)



L	G	H
2.2	0.4	1.8

Specifications

Part Number	Inductance (uH)	Tolerance (±)	DCR(mΩ) ±20%	IDC1(A) Max.	IDC2(A) Max.	Test Frequency (Hz)
CMI-CDOP201612NF-R47N	0.47	30%	42	2.80	2.80	1M
CMI-CDOP201612NF-1R0N	1.0	30%	75	2.00	1.90	1M
CMI-CDOP201612NF-2R2N	2.2	30%	165	1.40	1.30	1M
CMI-CDOP201612NF-3R3N	3.3	30%	240	1.10	1.00	1M
CMI-CDOP201612NF-4R7N	4.7	30%	340	0.91	0.83	1M

- IDC1: When based on the inductance change rate (approximately 30% below in the initial value)
- IDC2: When based on the temperature increase (Temperature increase of approximately 40°C by self heating)
- Operating Temperature Range(including self temperature) : -40°C ~ +105 °C

Ilsan Sales Office (KOREA)
 H.K Sales Office (HONGKONG)
 Shenzhen Sales Office (CHINA)
 LA Sales Office (USA)
 Hungary Sales office (EUROPE)

+82)31-904-1444
 +852)2711-5551
 +86)755-8663-6929
 +1)866-446-3586
 +36)30-913-7706

coilmaster@coilmaster.com
coilmaster@coilmaster.com
coilmaster@coilmaster.com
coilmaster@coilmaster.com
coilmaster@coilmaster.com

- All specifications are subject to change without notice.
- Update date : 2018.04.11