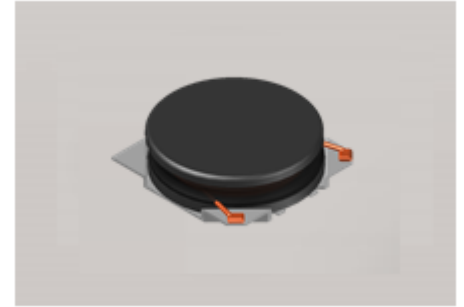


CMI-CDOP201612NH-SERIES



Features

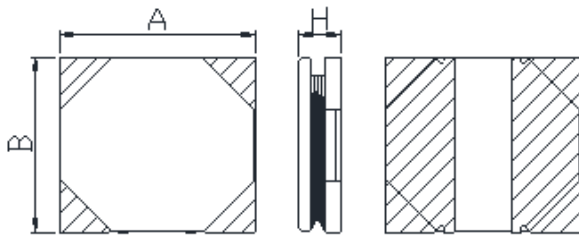
- ▶ High current and low profile.
- ▶ Available tape and reel for auto insertion
- ▶ Simple and Shield structure.
- ▶ Halogen-Free



Applications

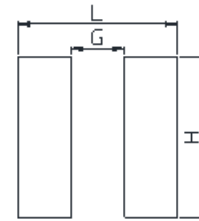
- ▶ Car navigation, car stereo and car accessories only
(Not available for use related to driving, curving, stopping, and the other safety.)

Dimension (Unit:mm)



A	B	H
2.0±0.2	1.6±0.2	1.2Max

Land Pattern (Unit:mm)



L	G	H
2.2	0.4	1.8

Specifications

Part Number	Inductance (uH)	Tolerance (±)	DCR(mΩ) ±20%	IDC1(A) Max.	IDC2(A) Max.	Test Frequency (Hz)
CMI-CDOP201612NH-R47N	0.47	30%	42	2.80	2.80	1M
CMI-CDOP201612NH-1R0N	1.0	30%	75	2.00	1.90	1M
CMI-CDOP201612NH-2R2N	2.2	30%	165	1.40	1.30	1M
CMI-CDOP201612NH-3R3N	3.3	30%	240	1.10	1.00	1M
CMI-CDOP201612NH-4R7N	4.7	30%	340	0.91	0.83	1M

- IDC1: When based on the inductance change rate (approximately 30% below in the initial value)
- IDC2: When based on the temperature increase (Temperature increase of approximately 40°C by self heating)
- Operating Temperature Range(including self temperature) : -40°C ~ +105 °C

Ilisan Sales Office (KOREA)

H.K Sales Office (HONGKONG)

Shenzhen Sales Office (CHINA)

LA Sales Office (USA)

Hungary Sales office (EUROPE)

+82)31-904-1444

+852)2711-5551

+86)755-8663-6929

+1)866-446-3586

+36)30-913-7706

coilmaster@coilmaster.com

coilmaster@coilmaster.com

coilmaster@coilmaster.com

coilmaster@coilmaster.com

coilmaster@coilmaster.com

- All specifications are subject to change without notice.
- Update date : 2018.04.11

www.coilmaster.com