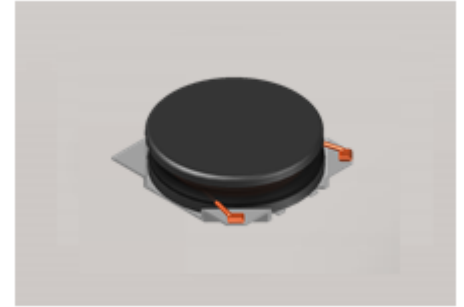


CMI-CDOP252010NH-SERIES



Features

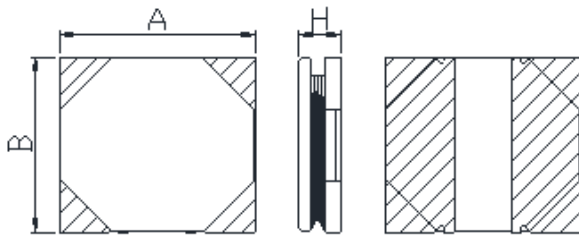
- ▶ High current and low profile.
- ▶ Available tape and reel for auto insertion
- ▶ Simple and Shield structure.
- ▶ Halogen-Free



Applications

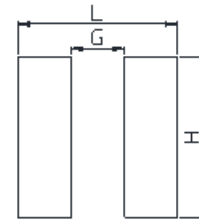
- ▶ Car navigation, car stereo and car accessories only
(Not available for use related to driving, curving, stopping, and the other safety.)

Dimension (Unit:mm)



A	B	H
2.5±0.2	2.0±0.2	1.0Max

Land Pattern (Unit:mm)



L	G	H
2.7	0.5	2.2

Specifications

Part Number	Inductance (uH)	Tolerance (±)	DCR(mΩ) ±20%	IDC1(A) Max.	IDC2(A) Max.	Test Frequency (Hz)
CMI-CDOP252010NH-R50N	0.50	30%	45	3.20	2.90	1M
CMI-CDOP252010NH-R68N	0.68	30%	51	2.70	2.60	1M
CMI-CDOP252010NH-1R0N	1.0	30%	77	2.60	2.10	1M
CMI-CDOP252010NH-2R2N	2.2	30%	145	1.50	1.30	1M
CMI-CDOP252010NH-3R3N	3.3	30%	225	1.20	1.00	1M
CMI-CDOP252010NH-4R7N	4.7	30%	320	1.10	0.99	1M
CMI-CDOP252010NH-6R8N	6.8	30%	460	0.86	0.84	1M
CMI-CDOP252010NH-100M	10	20%	580	0.68	0.67	1M
CMI-CDOP252010NH-220M	22	20%	1625	0.43	0.34	1M

- IDC1: When based on the inductance change rate (approximately 30% below in the initial value)
- IDC2: When based on the temperature increase (Temperature increase of approximately 40°C by self heating)
- Operating Temperature Range(including self temperature) : -40°C ~ +105 °C

Ilsan Sales Office (KOREA)

+82)31-904-1444

coilmaster@coilmaster.com

H.K Sales Office (HONGKONG)

+852)2711-5551

coilmaster@coilmaster.com

Shenzhen Sales Office (CHINA)

+86)755-8663-6929

coilmaster@coilmaster.com

LA Sales Office (USA)

+1)866-446-3586

coilmaster@coilmaster.com

Hungary Sales office (EUROPE)

+36)30-913-7706

coilmaster@coilmaster.com

- All specifications are subject to change without notice.
- Update date : 2018.04.11

www.coilmaster.com