

CMI-CDOP252012NF-SERIES

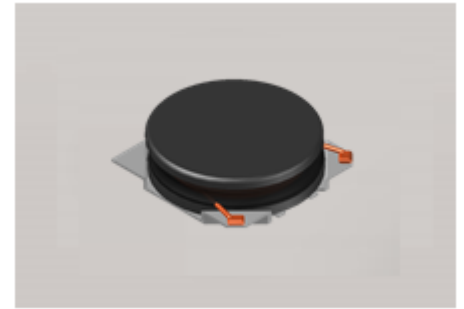


Features

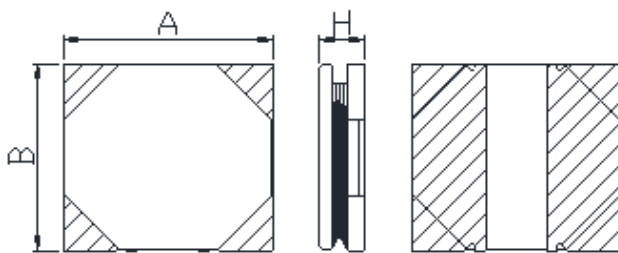
- ▶ High current and low profile.
- ▶ Available tape and reel for auto insertion
- ▶ Simple and Shield structure.

Applications

- ▶ Equipment using for automotive
(ECM, airbags, headlights, electronic powder steering, motors, ABS, other)

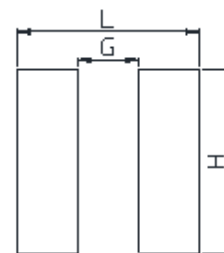


Dimension (Unit:mm)



A	B	H
2.5±0.2	2.0±0.2	1.2Max

Land Pattern (Unit:mm)



L	G	H
2.7	0.5	2.2

Specifications

Part Number	Inductance (uH)	Tolerance (±)	DCR(mΩ) ±20%	IDC1(A) Max.	IDC2(A) Max.	Test Frequency (Hz)
CMI-CDOP252012NF-R47N	0.47	30%	31	3.60	3.50	1M
CMI-CDOP252012NF-R68M	0.68	30%	33	3.00	3.10	1M
CMI-CDOP252012NF-1R0N	1.0	30%	47	2.40	2.40	1M
CMI-CDOP252012NF-1R5M	1.5	20%	76	2.10	2.30	1M
CMI-CDOP252012NF-2R2M	2.2	20%	80	1.80	1.80	1M
CMI-CDOP252012NF-4R7M	4.7	20%	190	1.20	1.30	1M
CMI-CDOP252012NF-100M	10	20%	360	0.80	0.80	1M

- IDC1: When based on the inductance change rate (approximately 30% below in the initial value)
- IDC2: When based on the temperature increase (Temperature increase of approximately 40°C by self heating)
- Operating Temperature Range(including self temperature) : -40°C ~ +105 °C

Ilsan Sales Office (KOREA)

H.K Sales Office (HONGKONG)

Shenzhen Sales Office (CHINA)

LA Sales Office (USA)

Hungary Sales office (EUROPE)

+82)31-904-1444

+852)2711-5551

+86)755-8663-6929

+1)866-446-3586

+36)30-913-7706

coilmaster@coilmaster.com

coilmaster@coilmaster.com

coilmaster@coilmaster.com

coilmaster@coilmaster.com

coilmaster@coilmaster.com

- All specifications are subject to change without notice.
- Update date : 2018.04.11