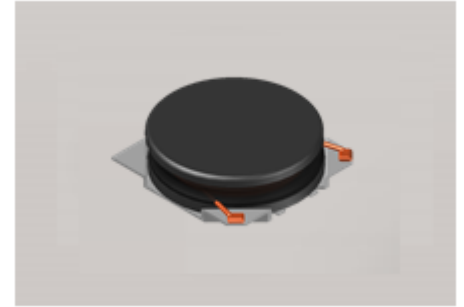


# CMI-CDOP3015NH-SERIES



## Features

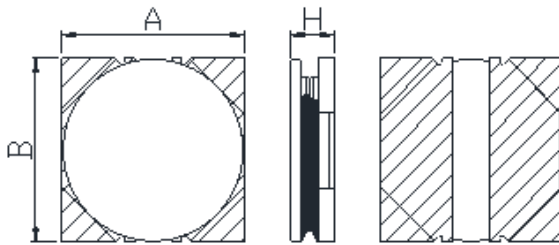
- ▶ High current and low profile.
- ▶ Available tape and reel for auto insertion
- ▶ Simple and Shield structure.
- ▶ Halogen-Free



## Applications

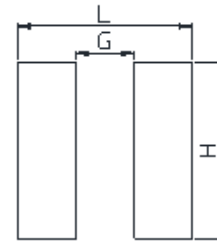
- ▶ Car navigation, car stereo and car accessories only  
(Not available for use related to driving, curving, stopping, and the other safety.)

Dimension (Unit:mm)



| A       | B       | H      |
|---------|---------|--------|
| 3.0±0.2 | 3.0±0.2 | 1.5Max |

Land Pattern (Unit:mm)



| L   | G   | H   |
|-----|-----|-----|
| 3.2 | 0.8 | 3.2 |

## Specifications

| Part Number         | Inductance (uH) | Tolerance (±) | DCR(mΩ) ±20% | IDC1(A) Max. | IDC2(A) Max. | Test Frequency (Hz) |
|---------------------|-----------------|---------------|--------------|--------------|--------------|---------------------|
| CMI-CDOP3015NH-1R0N | 1.0             | 30%           | 38           | 2.70         | 2.70         | 1M                  |
| CMI-CDOP3015NH-2R2N | 2.2             | 30%           | 65           | 1.90         | 1.90         | 1M                  |
| CMI-CDOP3015NH-4R7N | 4.7             | 30%           | 120          | 1.40         | 1.40         | 1M                  |
| CMI-CDOP3015NH-6R8N | 6.8             | 30%           | 180          | 1.10         | 1.00         | 1M                  |
| CMI-CDOP3015NH-100M | 10              | 20%           | 295          | 0.96         | 0.85         | 1M                  |
|                     |                 |               |              |              |              |                     |
|                     |                 |               |              |              |              |                     |
|                     |                 |               |              |              |              |                     |
|                     |                 |               |              |              |              |                     |

- IDC1: When based on the inductance change rate (approximately 30% below in the initial value)
- IDC2: When based on the temperature increase (Temperature increase of approximately 40°C by self heating)
- Operating Temperature Range(including self temperature) : -40°C ~ +105 °C

Ilisan Sales Office (KOREA)  
H.K Sales Office (HONGKONG)  
Shenzhen Sales Office (CHINA)  
LA Sales Office (USA)  
Hungary Sales office (EUROPE)

+82)31-904-1444  
+852)2711-5551  
+86)755-8663-6929  
+1)866-446-3586  
+36)30-913-7706

[coilmaster@coilmaster.com](mailto:coilmaster@coilmaster.com)  
[coilmaster@coilmaster.com](mailto:coilmaster@coilmaster.com)  
[coilmaster@coilmaster.com](mailto:coilmaster@coilmaster.com)  
[coilmaster@coilmaster.com](mailto:coilmaster@coilmaster.com)  
[coilmaster@coilmaster.com](mailto:coilmaster@coilmaster.com)

- All specifications are subject to change without notice.
- Update date : 2018.04.11