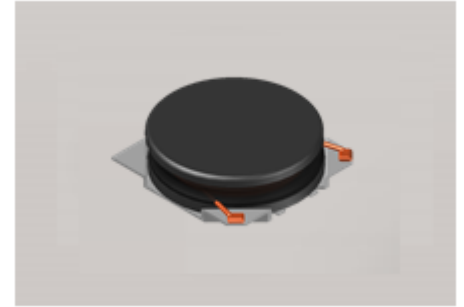


# CMI-CDOP4010NH-SERIES



## Features

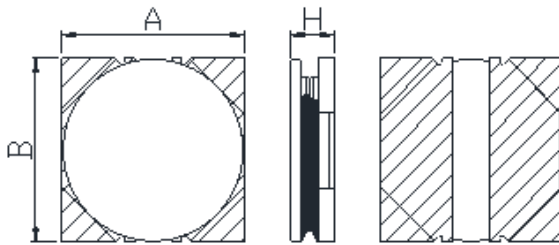
- ▶ High current and low profile.
- ▶ Available tape and reel for auto insertion
- ▶ Simple and Shield structure.
- ▶ Halogen-Free



## Applications

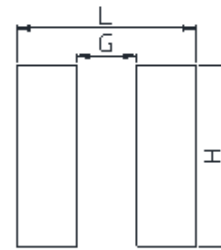
- ▶ Car navigation, car stereo and car accessories only  
(Not available for use related to driving, curving, stopping, and the other safety.)

Dimension (Unit:mm)



A	B	H
4.0±0.2	4.0±0.2	1.0Max

Land Pattern (Unit:mm)



L	G	H
4.2	0.9	4.2

## Specifications

Part Number	Inductance (uH)	Tolerance (±)	DCR(mΩ) ±20%	IDC1(A) Max.	IDC2(A) Max.	Test Frequency (Hz)
CMI-CDOP4010NH-R50N	0.5	30%	29	4.30	3.50	1M
CMI-CDOP4010NH-1R0N	1.0	30%	45	3.00	2.70	1M
CMI-CDOP4010NH-2R2N	2.2	30%	96	2.00	1.80	1M
CMI-CDOP4010NH-4R7N	4.7	30%	165	1.40	1.40	1M
CMI-CDOP4010NH-6R8N	6.8	30%	252	1.20	1.00	1M
CMI-CDOP4010NH-100M	10	30%	365	0.99	0.96	1M
CMI-CDOP4010NH-220M	22	20%	812	0.62	0.59	1M

- IDC1: When based on the inductance change rate (approximately 30% below in the initial value)
- IDC2: When based on the temperature increase (Temperature increase of approximately 40°C by self heating)
- Operating Temperature Range(including self temperature) : -40°C ~ +105 °C

Ilisan Sales Office (KOREA)

+82)31-904-1444

[coilmaster@coilmaster.com](mailto:coilmaster@coilmaster.com)

H.K Sales Office (HONGKONG)

+852)2711-5551

[coilmaster@coilmaster.com](mailto:coilmaster@coilmaster.com)

Shenzhen Sales Office (CHINA)

+86)755-8663-6929

[coilmaster@coilmaster.com](mailto:coilmaster@coilmaster.com)

LA Sales Office (USA)

+1)866-446-3586

[coilmaster@coilmaster.com](mailto:coilmaster@coilmaster.com)

Hungary Sales office (EUROPE)

+36)30-913-7706

[coilmaster@coilmaster.com](mailto:coilmaster@coilmaster.com)

- All specifications are subject to change without notice.
- Update date : 2018.04.11

[www.coilmaster.com](http://www.coilmaster.com)