

CMI-CDOP4012NF-SERIES

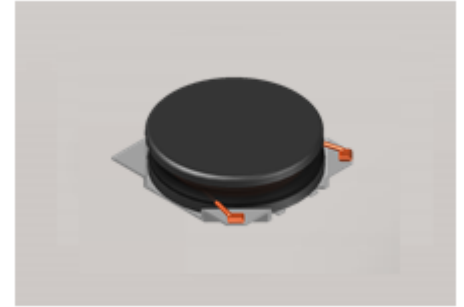


Features

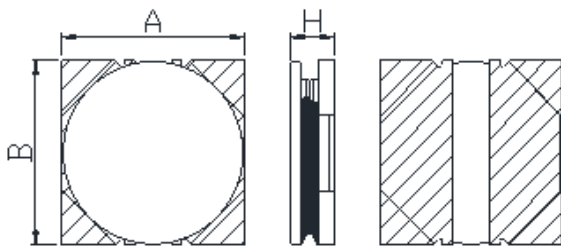
- ▶ High current and low profile.
- ▶ Available tape and reel for auto insertion
- ▶ Simple and Shield structure.

Applications

- ▶ Equipment using for automotive
(ECM, airbags, headlights, electronic powder steering, motors, ABS, other)

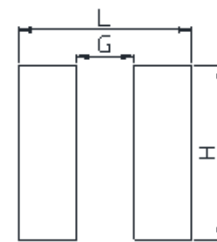


Dimension (Unit:mm)



A	B	H
4.0±0.2	4.0±0.2	1.2Max

Land Pattern (Unit:mm)



L	G	H
4.2	0.9	4.2

Specifications

Part Number	Inductance (uH)	Tolerance (±)	DCR(mΩ) ±20%	IDC1(A) Max.	IDC2(A) Max.	Test Frequency (Hz)
CMI-CDOP4012NF-1R0N	1.0	30%	45	3.50	3.00	1M
CMI-CDOP4012NF-2R2N	2.2	30%	85	2.50	2.00	1M
CMI-CDOP4012NF-3R3N	3.3	30%	119	2.00	1.70	1M
CMI-CDOP4012NF-4R7N	4.7	30%	160	1.70	1.20	1M
CMI-CDOP4012NF-6R8N	6.8	30%	206	1.40	1.10	1M
CMI-CDOP4012NF-100M	10	20%	350	1.20	0.99	1M
CMI-CDOP4012NF-220M	22	20%	706	0.81	0.76	1M
CMI-CDOP4012NF-330M	33	20%	1055	0.67	0.61	1M

- IDC1: When based on the inductance change rate (approximately 30% below in the initial value)
- IDC2: When based on the temperature increase (Temperature increase of approximately 40°C by self heating)
- Operating Temperature Range(including self temperature) : -40°C ~ +105 °C

Ilisan Sales Office (KOREA)	+82)31-904-1444
H.K Sales Office (HONGKONG)	+852)2711-5551
Shenzhen Sales Office (CHINA)	+86)755-8663-6929
LA Sales Office (USA)	+1)866-446-3586
Hungary Sales office (EUROPE)	+36)30-913-7706

coilmaster@coilmaster.com
coilmaster@coilmaster.com
coilmaster@coilmaster.com
coilmaster@coilmaster.com
coilmaster@coilmaster.com

- All specifications are subject to change without notice.
- Update date : 2018.04.11