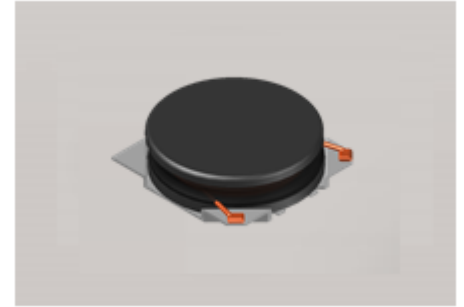


# CMI-CDOP4012NH-SERIES



## Features

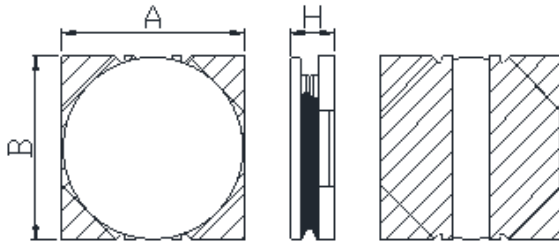
- ▶ High current and low profile.
- ▶ Available tape and reel for auto insertion
- ▶ Simple and Shield structure.
- ▶ Halogen-Free



## Applications

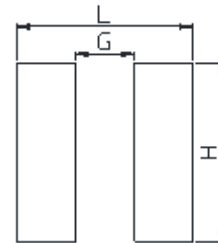
- ▶ Car navigation, car stereo and car accessories only  
(Not available for use related to driving, curving, stopping, and the other safety.)

Dimension (Unit:mm)



A	B	H
4.0±0.2	4.0±0.2	1.2Max

Land Pattern (Unit:mm)



L	G	H
4.2	0.9	4.2

## Specifications

Part Number	Inductance (uH)	Tolerance (±)	DCR(mΩ) ±20%	IDC1(A) Max.	IDC2(A) Max.	Test Frequency (Hz)
CMI-CDOP4012NH-1R0N	1.0	30%	45	3.50	3.00	1M
CMI-CDOP4012NH-2R2N	2.2	30%	85	2.50	2.00	1M
CMI-CDOP4012NH-3R3N	3.3	30%	119	2.00	1.70	1M
CMI-CDOP4012NH-4R7N	4.7	30%	160	1.70	1.20	1M
CMI-CDOP4012NH-6R8N	6.8	30%	206	1.40	1.10	1M
CMI-CDOP4012NH-100M	10	20%	350	1.20	0.99	1M
CMI-CDOP4012NH-220M	22	20%	706	0.81	0.76	1M
CMI-CDOP4012NH-330M	33	20%	1055	0.67	0.61	1M

- IDC1: When based on the inductance change rate (approximately 30% below in the initial value)
- IDC2: When based on the temperature increase (Temperature increase of approximately 40°C by self heating)
- Operating Temperature Range(including self temperature) : -40°C ~ +105 °C

Ilisan Sales Office (KOREA)  
H.K Sales Office (HONGKONG)  
Shenzhen Sales Office (CHINA)  
LA Sales Office (USA)  
Hungary Sales office (EUROPE)

+82)31-904-1444  
+852)2711-5551  
+86)755-8663-6929  
+1)866-446-3586  
+36)30-913-7706

[coilmaster@coilmaster.com](mailto:coilmaster@coilmaster.com)  
[coilmaster@coilmaster.com](mailto:coilmaster@coilmaster.com)  
[coilmaster@coilmaster.com](mailto:coilmaster@coilmaster.com)  
[coilmaster@coilmaster.com](mailto:coilmaster@coilmaster.com)  
[coilmaster@coilmaster.com](mailto:coilmaster@coilmaster.com)

- All specifications are subject to change without notice.
- Update date : 2018.04.11