

# CMI-CDOP4014NF-SERIES

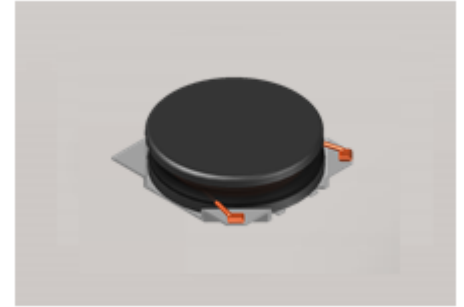


## Features

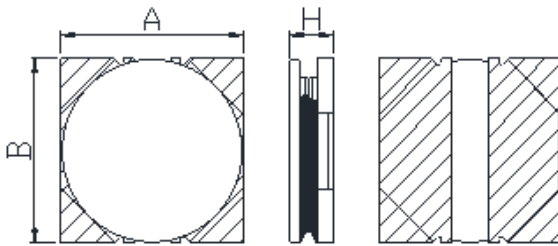
- ▶ High current and low profile.
- ▶ Available tape and reel for auto insertion
- ▶ Simple and Shield structure.

## Applications

- ▶ Equipment using for automotive  
(ECM, airbags, headlights, electronic powder steering, motors, ABS, other)

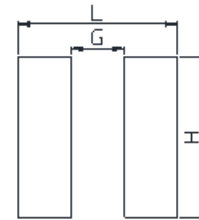


## Dimension (Unit:mm)



A	B	H
4.0±0.2	4.0±0.2	1.4Max

## Land Pattern (Unit:mm)



L	G	H
4.2	0.9	4.2

## Specifications

Part Number	Inductance (uH)	Tolerance (±)	DCR(mΩ) ±20%	IDC1(A) Max.	IDC2(A) Max.	Test Frequency (Hz)
CMI-CDOP4014NF-R50N	0.5	30%	22	5.60	4.50	1M
CMI-CDOP4014NF-1R0N	1.0	30%	33	3.90	3.30	1M
CMI-CDOP4014NF-1R5N	1.5	30%	45	3.20	2.90	1M
CMI-CDOP4014NF-2R2N	2.2	30%	55	2.90	2.50	1M
CMI-CDOP4014NF-3R3N	3.3	30%	78	2.30	2.10	1M
CMI-CDOP4014NF-4R7N	4.7	30%	114	1.90	1.60	1M
CMI-CDOP4014NF-6R8N	6.8	30%	163	1.70	1.50	1M
CMI-CDOP4014NF-100M	10	20%	238	1.30	1.30	1M
CMI-CDOP4014NF-220M	22	20%	515	0.92	0.92	1M

- IDC1: When based on the inductance change rate (approximately 30% below in the initial value)
- IDC2: When based on the temperature increase (Temperature increase of approximately 40°C by self heating)
- Operating Temperature Range(including self temperature) : -40°C ~ +105 °C

Ilsan Sales Office (KOREA)

H.K Sales Office (HONGKONG)

Shenzhen Sales Office (CHINA)

LA Sales Office (USA)

Hungary Sales office (EUROPE)

+82)31-904-1444

+852)2711-5551

+86)755-8663-6929

+1)866-446-3586

+36)30-913-7706

[coilmaster@coilmaster.com](mailto:coilmaster@coilmaster.com)

[coilmaster@coilmaster.com](mailto:coilmaster@coilmaster.com)

[coilmaster@coilmaster.com](mailto:coilmaster@coilmaster.com)

[coilmaster@coilmaster.com](mailto:coilmaster@coilmaster.com)

[coilmaster@coilmaster.com](mailto:coilmaster@coilmaster.com)

- All specifications are subject to change without notice.
- Update date : 2018.04.11

[www.coilmaster.com](http://www.coilmaster.com)