

CMI-CDOP5010NF-SERIES

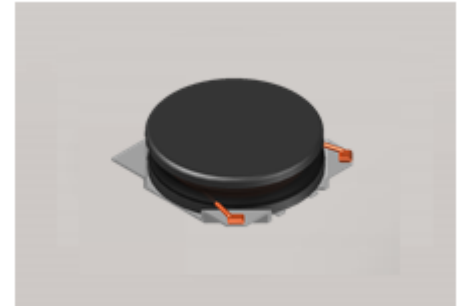


Features

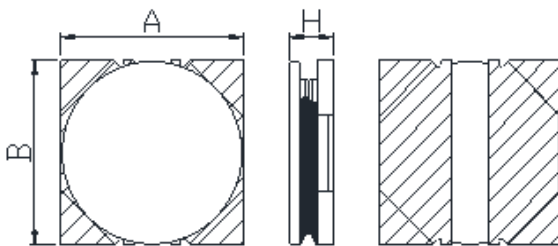
- ▶ High current and low profile.
- ▶ Available tape and reel for auto insertion
- ▶ Simple and Shield structure.

Applications

- ▶ Equipment using for automotive
(ECM, airbags, headlights, electronic powder steering, motors, ABS, other)

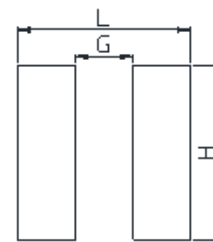


Dimension (Unit:mm)



A	B	H
5.0±0.2	5.0±0.2	1.0Max

Land Pattern (Unit:mm)



L	G	H
5.2	1.1	5.2

Specifications

Part Number	Inductance (uH)	Tolerance (±)	DCR(mΩ) ±20%	IDC1(A) Max.	IDC2(A) Max.	Test Frequency (Hz)
CMI-CDOP5010NF-1R0N	1.0	30%	57	3.00	2.70	1M
CMI-CDOP5010NF-2R2N	2.2	30%	82	2.20	2.10	1M
CMI-CDOP5010NF-4R7N	4.7	30%	149	1.50	1.50	1M
CMI-CDOP5010NF-6R8N	6.8	30%	224	1.20	1.30	1M
CMI-CDOP5010NF-100M	10	20%	311	1.10	1.10	1M
CMI-CDOP5010NF-220M	22	20%	660	0.70	0.74	1M

- IDC1: When based on the inductance change rate (approximately 30% below in the initial value)
- IDC2: When based on the temperature increase (Temperature increase of approximately 40°C by self heating)
- Operating Temperature Range(including self temperature) : -40°C ~ +105 °C

Ilsan Sales Office (KOREA)
H.K Sales Office (HONGKONG)
Shenzhen Sales Office (CHINA)
LA Sales Office (USA)
Hungary Sales office (EUROPE)

+82)31-904-1444
+852)2711-5551
+86)755-8663-6929
+1)866-446-3586
+36)30-913-7706

coilmaster@coilmaster.com
coilmaster@coilmaster.com
coilmaster@coilmaster.com
coilmaster@coilmaster.com
coilmaster@coilmaster.com

- All specifications are subject to change without notice.
- Update date : 2018.04.11