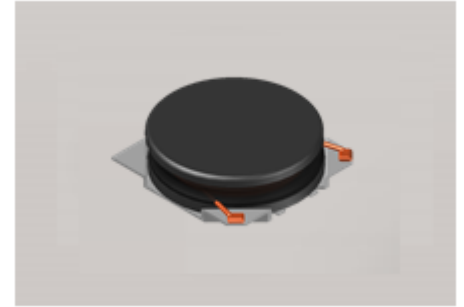


CMI-CDOP5010NH-SERIES



Features

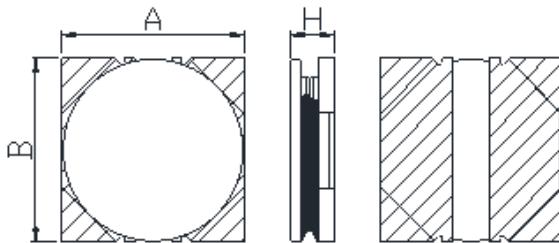
- ▶ High current and low profile.
- ▶ Available tape and reel for auto insertion
- ▶ Simple and Shield structure.
- ▶ Halogen-Free



Applications

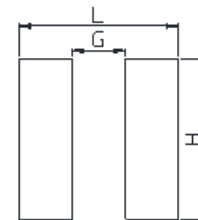
- ▶ Car navigation, car stereo and car accessories only
(Not available for use related to driving, curving, stopping, and the other safety.)

Dimension (Unit:mm)



A	B	H
5.0±0.2	5.0±0.2	1.0Max

Land Pattern (Unit:mm)



L	G	H
5.2	1.1	5.2

Specifications

Part Number	Inductance (uH)	Tolerance (±)	DCR(mΩ) ±20%	IDC1(A) Max.	IDC2(A) Max.	Test Frequency (Hz)
CMI-CDOP5010NH-1R0N	1.0	30%	57	3.00	2.70	1M
CMI-CDOP5010NH-2R2N	2.2	30%	82	2.20	2.10	1M
CMI-CDOP5010NH-4R7N	4.7	30%	149	1.50	1.50	1M
CMI-CDOP5010NH-6R8N	6.8	30%	224	1.20	1.30	1M
CMI-CDOP5010NH-100M	10	20%	311	1.10	1.10	1M
CMI-CDOP5010NH-220M	22	20%	660	0.70	0.74	1M

- IDC1: When based on the inductance change rate (approximately 30% below in the initial value)
- IDC2: When based on the temperature increase (Temperature increase of approximately 40°C by self heating)
- Operating Temperature Range(including self temperature) : -40°C ~ +105 °C

Ilisan Sales Office (KOREA) +82)31-904-1444
 H.K Sales Office (HONGKONG) +852)2711-5551
 Shenzhen Sales Office (CHINA) +86)755-8663-6929
 LA Sales Office (USA) +1)866-446-3586
 Hungary Sales office (EUROPE) +36)30-913-7706

coilmaster@coilmaster.com
coilmaster@coilmaster.com
coilmaster@coilmaster.com
coilmaster@coilmaster.com
coilmaster@coilmaster.com

- All specifications are subject to change without notice.
- Update date : 2018.04.11