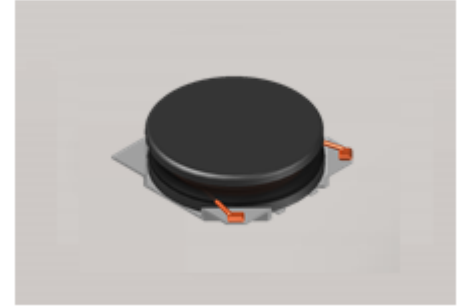


CMI-CDOP5012NF-SERIES



Features

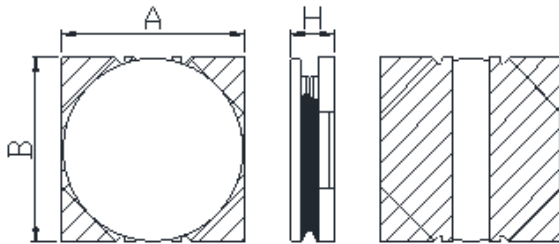
- ▶ High current and low profile.
- ▶ Available tape and reel for auto insertion
- ▶ Simple and Shield structure.



Applications

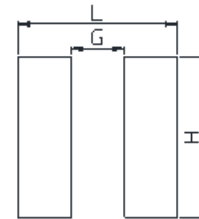
- ▶ Equipment using for automotive
(ECM, airbags, headlights, electronic powder steering, motors, ABS, other)

Dimension (Unit:mm)



A	B	H
5.0±0.2	5.0±0.2	1.2Max

Land Pattern (Unit:mm)



L	G	H
5.2	1.1	5.2

Specifications

Part Number	Inductance (uH)	Tolerance (±)	DCR(mΩ) ±20%	IDC1(A) Max.	IDC2(A) Max.	Test Frequency (Hz)
CMI-CDOP5012NF-1R0N	1.0	30%	53	3.80	2.90	1M
CMI-CDOP5012NF-2R2N	2.2	30%	80	2.70	2.30	1M
CMI-CDOP5012NF-4R7N	4.7	30%	132	2.00	1.80	1M
CMI-CDOP5012NF-6R8N	6.8	30%	191	1.60	1.40	1M
CMI-CDOP5012NF-100M	10	20%	316	1.30	1.00	1M
CMI-CDOP5012NF-220M	22	20%	656	0.90	0.79	1M

- IDC1: When based on the inductance change rate (approximately 30% below in the initial value)
- IDC2: When based on the temperature increase (Temperature increase of approximately 40°C by self heating)
- Operating Temperature Range(including self temperature) : -40°C ~ +105 °c

Ilsan Sales Office (KOREA)
 H.K Sales Office (HONGKONG)
 Shenzhen Sales Office (CHINA)
 LA Sales Office (USA)
 Hungary Sales office (EUROPE)

+82)31-904-1444
 +852)2711-5551
 +86)755-8663-6929
 +1)866-446-3586
 +36)30-913-7706

coilmaster@coilmaster.com
coilmaster@coilmaster.com
coilmaster@coilmaster.com
coilmaster@coilmaster.com
coilmaster@coilmaster.com

- All specifications are subject to change without notice.
- Update date : 2018.04.11