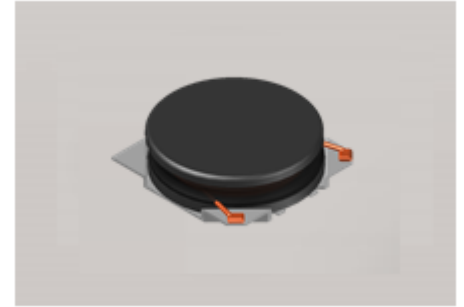


CMI-CDOP5020NH-SERIES



Features

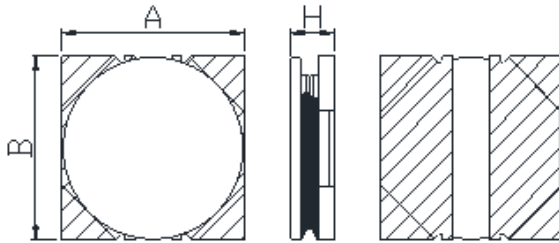
- ▶ High current and low profile.
- ▶ Available tape and reel for auto insertion
- ▶ Simple and Shield structure.
- ▶ Halogen-Free



Applications

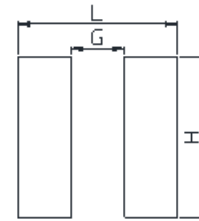
- ▶ Car navigation, car stereo and car accessories only
(Not available for use related to driving, curving, stopping, and the other safety.)

Dimension (Unit:mm)



A	B	H
5.0±0.2	5.0±0.2	2.0Max

Land Pattern (Unit:mm)



L	G	H
5.2	1.1	5.2

Specifications

Part Number	Inductance (uH)	Tolerance (±)	DCR(mΩ) ±20%	IDC1(A) Max.	IDC2(A) Max.	Test Frequency (Hz)
CMI-CDOP5020NH-1R0N	1.0	30%	33	5.50	3.90	1M
CMI-CDOP5020NH-2R2N	2.2	30%	40	4.00	2.90	1M
CMI-CDOP5020NH-3R3N	3.3	30%	53	3.50	2.50	1M
CMI-CDOP5020NH-4R7N	4.7	30%	80	2.60	2.00	1M
CMI-CDOP5020NH-6R8N	6.8	30%	101	2.40	2.00	1M
CMI-CDOP5020NH-100M	10	20%	147	1.90	1.50	1M
CMI-CDOP5020NH-150M	15	20%	227	1.50	1.20	1M
CMI-CDOP5020NH-220M	22	20%	302	1.30	1.10	1M
CMI-CDOP5020NH-330M	33	20%	467	1.10	0.84	1M

- IDC1: When based on the inductance change rate (approximately 30% below in the initial value)
- IDC2: When based on the temperature increase (Temperature increase of approximately 40°C by self heating)
- Operating Temperature Range(including self temperature) : -40°C ~ +105 °C

Ilisan Sales Office (KOREA)
H.K Sales Office (HONGKONG)
Shenzhen Sales Office (CHINA)
LA Sales Office (USA)
Hungary Sales office (EUROPE)

+82)31-904-1444
+852)2711-5551
+86)755-8663-6929
+1)866-446-3586
+36)30-913-7706

coilmaster@coilmaster.com
coilmaster@coilmaster.com
coilmaster@coilmaster.com
coilmaster@coilmaster.com
coilmaster@coilmaster.com

- All specifications are subject to change without notice.
- Update date : 2018.04.11