

CMI-CDOP5025NF-SERIES

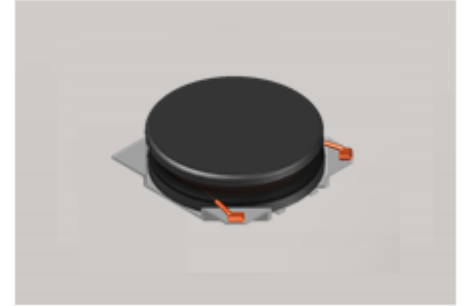


Features

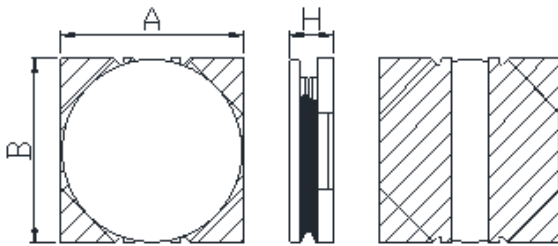
- ▶ High current and low profile.
- ▶ Available tape and reel for auto insertion
- ▶ Simple and Shield structure.

Applications

- ▶ Equipment using for automotive
(ECM, airbags, headlights, electronic powder steering, motors, ABS, other)

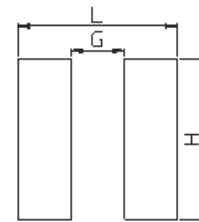


Dimension (Unit:mm)



A	B	H
5.0±0.2	5.0±0.2	2.5Max

Land Pattern (Unit:mm)



L	G	H
5.2	1.1	5.2

Specifications

Part Number	Inductance (uH)	Tolerance (±)	DCR(mΩ) ±20%	IDC1(A) Max.	IDC2(A) Max.	Test Frequency (Hz)
CMI-CDOP5025NF-2R2N	2.2	30%	33	5.80(6.00)	4.40(4.60)	1M

- IDC1: When based on the inductance change rate (approximately 30% below in the initial value)
- IDC2: When based on the temperature increase (Temperature increase of approximately 40°C by self heating)
- Operating Temperature Range(including self temperature) : -40°C ~ +105 °C

Ilsan Sales Office (KOREA)
H.K Sales Office (HONGKONG)
Shenzhen Sales Office (CHINA)
LA Sales Office (USA)
Hungary Sales office (EUROPE)

+82)31-904-1444
+852)2711-5551
+86)755-8663-6929
+1)866-446-3586
+36)30-913-7706

coilmaster@coilmaster.com
coilmaster@coilmaster.com
coilmaster@coilmaster.com
coilmaster@coilmaster.com
coilmaster@coilmaster.com

- All specifications are subject to change without notice.
- Update date : 2018.04.11