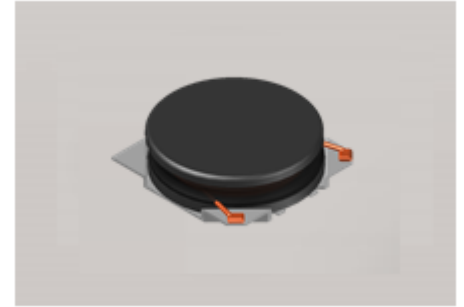


CMI-CDOP5025NH-SERIES



Features

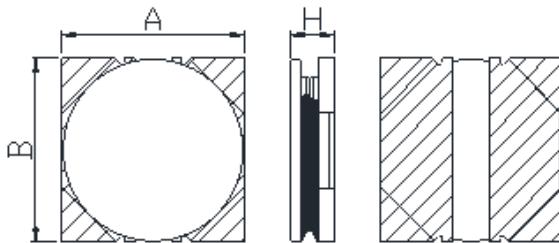
- ▶ High current and low profile.
- ▶ Available tape and reel for auto insertion
- ▶ Simple and Shield structure.
- ▶ Halogen-Free



Applications

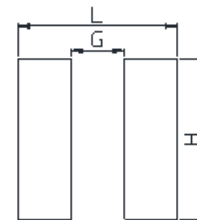
- ▶ Car navigation, car stereo and car accessories only
(Not available for use related to driving, curving, stopping, and the other safety.)

Dimension (Unit:mm)



| A | B | H |
|---------|---------|--------|
| 5.0±0.2 | 5.0±0.2 | 2.5Max |

Land Pattern (Unit:mm)



| L | G | H |
|-----|-----|-----|
| 5.2 | 1.1 | 5.2 |

Specifications

| Part Number | Inductance (uH) | Tolerance (±) | DCR(mΩ) ±20% | IDC1(A) Max. | IDC2(A) Max. | Test Frequency (Hz) |
|---------------------|-----------------|---------------|--------------|--------------|--------------|---------------------|
| CMI-CDOP5025NH-2R2N | 2.2 | 30% | 33 | 5.80(6.00) | 4.40(4.60) | 1M |
| | | | | | | |
| | | | | | | |
| | | | | | | |
| | | | | | | |
| | | | | | | |
| | | | | | | |
| | | | | | | |

- IDC1: When based on the inductance change rate (approximately 30% below in the initial value)
- IDC2: When based on the temperature increase (Temperature increase of approximately 40°C by self heating)
- Operating Temperature Range(including self temperature) : -40°C ~ +105 °C

Ilisan Sales Office (KOREA) +82)31-904-1444
 H.K Sales Office (HONGKONG) +852)2711-5551
 Shenzhen Sales Office (CHINA) +86)755-8663-6929
 LA Sales Office (USA) +1)866-446-3586
 Hungary Sales office (EUROPE) +36)30-913-7706

coilmaster@coilmaster.com
coilmaster@coilmaster.com
coilmaster@coilmaster.com
coilmaster@coilmaster.com
coilmaster@coilmaster.com

- All specifications are subject to change without notice.
- Update date : 2018.04.11