

# CMI-CDOP5030NF-SERIES

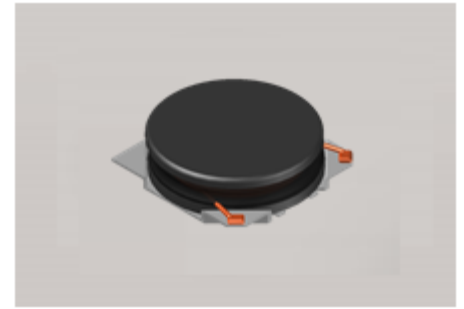


## Features

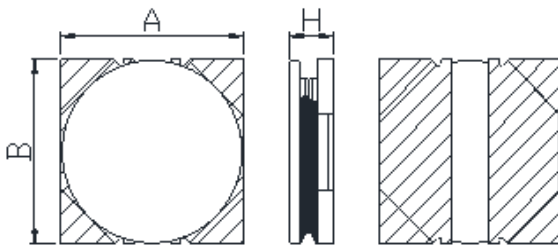
- ▶ High current and low profile.
- ▶ Available tape and reel for auto insertion
- ▶ Simple and Shield structure.

## Applications

- ▶ Equipment using for automotive  
(ECM, airbags, headlights, electronic powder steering, motors, ABS, other)

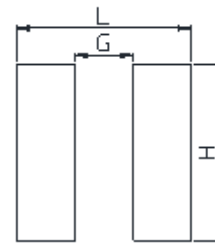


## Dimension (Unit:mm)



A	B	H
5.0±0.2	5.0±0.2	3.0Max

## Land Pattern (Unit:mm)



L	G	H
5.2	1.1	5.2

## Specifications

Part Number	Inductance (uH)	Tolerance (±)	DCR(mΩ) ±20%	IDC1(A) Max.	IDC2(A) Max.	Test Frequency (Hz)
CMI-CDOP5030NF-1R0N	1.0	30%	22	5.70	4.30	1M
CMI-CDOP5030NF-1R5N	1.5	30%	27	5.10	4.00	1M
CMI-CDOP5030NF-1R8N	1.8	30%	28	4.50	3.90	1M
CMI-CDOP5030NF-2R2N	2.2	30%	32	3.90	3.50	1M
CMI-CDOP5030NF-3R3N	3.3	30%	35	3.50	3.40	1M
CMI-CDOP5030NF-4R7N	4.7	30%	51	2.80	2.60	1M
CMI-CDOP5030NF-6R8N	6.8	30%	64	2.40	2.30	1M
CMI-CDOP5030NF-100M	10	20%	96	1.90	1.90	1M
CMI-CDOP5030NF-220M	22	20%	190	1.30	1.40	1M

- IDC1: When based on the inductance change rate (approximately 30% below in the initial value)
- IDC2: When based on the temperature increase (Temperature increase of approximately 40°C by self heating)
- Operating Temperature Range(including self temperature) : -40°C ~ +105 °C

Ilsan Sales Office (KOREA)  
H.K Sales Office (HONGKONG)  
Shenzhen Sales Office (CHINA)  
LA Sales Office (USA)  
Hungary Sales office (EUROPE)

+82)31-904-1444  
+852)2711-5551  
+86)755-8663-6929  
+1)866-446-3586  
+36)30-913-7706

[coilmaster@coilmaster.com](mailto:coilmaster@coilmaster.com)  
[coilmaster@coilmaster.com](mailto:coilmaster@coilmaster.com)  
[coilmaster@coilmaster.com](mailto:coilmaster@coilmaster.com)  
[coilmaster@coilmaster.com](mailto:coilmaster@coilmaster.com)  
[coilmaster@coilmaster.com](mailto:coilmaster@coilmaster.com)

- All specifications are subject to change without notice.
- Update date : 2018.04.11