

CMI-CDSS252010NH-SERIES



Features

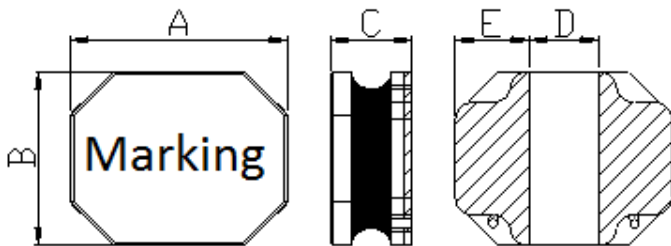
- ▶ High current and low profile.
- ▶ Available tape and reel for auto insertion
- ▶ Simple and Shield structure.
- ▶ RoHS compliant
- ▶ AEC-Q200 qualified.
- ▶ Halogen-Free



Applications

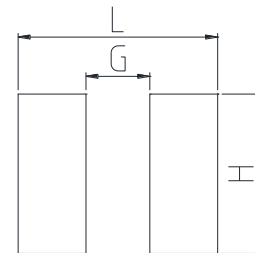
- ▶ Car navigation, car stereo and car accessories only
(Not available for use related to driving, curving, stopping, and the other safety.)

Dimension (Unit:mm)



A	B	C	D	E
2.5±0.2	2.0±0.2	1.0 Max.	0.8±0.2	0.8±0.2

Land Pattern (Unit:mm)



L	G	H
2.5	0.8	2.0

Specifications

Part Number	Inductance (uH)	Tolerance (±)	DCR(mΩ) ±20%	IDC1(A) Max.	IDC2(A) Max.	Test Frequency (Hz)
CMI-CDSS252010NH-1R0N	1.0	30%	93	1.98	1.98	1M
CMI-CDSS252010NH-1R5N	1.5	30%	148	1.71	1.62	1M
CMI-CDSS252010NH-2R2N	2.2	30%	178	1.45	1.51	1M
CMI-CDSS252010NH-3R3M	3.3	20%	286	1.09	1.20	1M
CMI-CDSS252010NH-4R7M	4.7	20%	421	0.93	0.91	1M
CMI-CDSS252010NH-5R6M	5.6	20%	481	0.82	0.84	1M
CMI-CDSS252010NH-6R8M	6.8	20%	598	0.81	0.79	1M
CMI-CDSS252010NH-100M	10	20%	797	0.66	0.73	1M
CMI-CDSS252010NH-150M	15	20%	1450	0.46	0.36	1M
CMI-CDSS252010NH-220M	22	20%	1839	0.45	0.30	1M

- IDC1: When based on the inductance change rate (approximately 30% below in the initial value)
- IDC2: When based on the temperature increase (Temperature increase of approximately 40°C by self heating)
- Operating Temperature Range(including self temperature) : -40°C ~ +105 °c

Ilisan Sales Office (KOREA) +82)31-904-1444 H.K Sales Office (HONGKONG) +852)2711-5551
 Shenzhen Sales Office (CHINA) +86)755-8663-6929 LA Sales Office (USA) +1)866-446-3586
 Hungary Sales office (EUROPE) +36)30-913-7706

▪ You can also contact us by e-mail : coilmaster@coilmaster.com

- All specifications are subject to change without notice.
- Update date : 2018.04.11

www.coilmaster.com