

# CMI-CDSS4012NH-SERIES

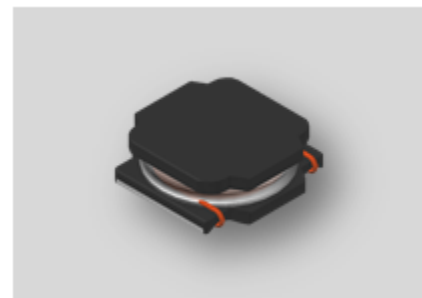


## Features

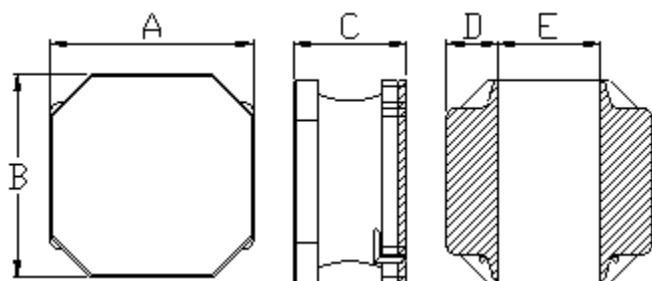
- ▶ High current and low profile.
- ▶ Available tape and reel for auto insertion
- ▶ Simple and Shield structure.
- ▶ Halogen-Free

## Applications

- ▶ Car navigation, car stereo and car accessories only  
(Not available for use related to driving, curving, stopping, and the other safety.)

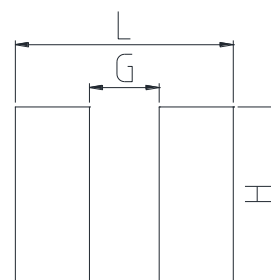


Dimension (Unit:mm)



A	B	C	D	E
4.0±0.2	4.0±0.2	1.2 Max.	1.2±0.2	1.6±0.2

Land Pattern (Unit:mm)



L	G	H
4.1	1.5	3.7

## Specifications

Part Number	Inductance (uH)	Tolerance (±)	DCR(mΩ) ±20%	IDC1(A) Max.	IDC2(A) Max.	Test Frequency (Hz)
CMI-CDSS4012NH-R82N	0.82	30%	50	3.02	1.65	100k
CMI-CDSS4012NH-1R0N	1.0	30%	50	2.61	1.65	100k
CMI-CDSS4012NH-1R5N	1.5	30%	65	2.10	1.46	100k
CMI-CDSS4012NH-1R8N	1.8	30%	80	2.12	1.32	100k
CMI-CDSS4012NH-2R2N	2.2	30%	80	1.76	1.32	100k
CMI-CDSS4012NH-3R3N	3.3	30%	110	1.72	1.12	100k
CMI-CDSS4012NH-4R7N	4.7.	30%	125	1.15	1.05	100k
CMI-CDSS4012NH-6R8M	6.8	20%	198	0.85	0.84	100k
CMI-CDSS4012NH-100M	10	20%	265	0.80	0.77	100k
CMI-CDSS4012NH-120M	12	20%	290	0.66	0.70	100k
CMI-CDSS4012NH-150M	15	20%	340	0.56	0.64	100k
CMI-CDSS4012NH-220M	22	20%	587	0.46	0.49	100k

- All specifications are subject to change without notice.
- Update date : 2018.04.11

Part Number	Inductance (uH)	Tolerance (±)	DCR(mΩ) ±20%	IDC1(A) Max.	IDC2(A) Max.	Test Frequency (Hz)
CMI-CDSS4012NH-330M	33	20%	810	0.42	0.42	100k
CMI-CDSS4012NH-470M	47	20%	1100	0.35	0.37	100k
CMI-CDSS4012NH-680M	68	20%	1950	0.28	0.27	100k
CMI-CDSS4012NH-820M	82	20%	2140	0.28	0.26	100k
CMI-CDSS4012NH-101M	100	20%	2210	0.25	0.25	100k

- IDC1: When based on the inductance change rate (approximately 30% below in the initial value)
- IDC2: When based on the temperature increase (Temperature increase of approximately 40°C by self heating)
- Operating Temperature Range(including self temperature) : -40°C ~ +105 °C

Ilsan Sales Office (KOREA)  
 H.K Sales Office (HONGKONG)  
 Shenzhen Sales Office (CHINA)  
 LA Sales Office (USA)  
 Hungary Sales office (EUROPE)

+82)31-904-1444  
 +852)2711-5551  
 +86)755-8663-6929  
 +1)866-446-3586  
 +36)30-913-7706

[coilmaster@coilmaster.com](mailto:coilmaster@coilmaster.com)  
[coilmaster@coilmaster.com](mailto:coilmaster@coilmaster.com)  
[coilmaster@coilmaster.com](mailto:coilmaster@coilmaster.com)  
[coilmaster@coilmaster.com](mailto:coilmaster@coilmaster.com)  
[coilmaster@coilmaster.com](mailto:coilmaster@coilmaster.com)

- All specifications are subject to change without notice.
- Update date : 2018.04.11