

CMI-CDSS4018NH-SERIES

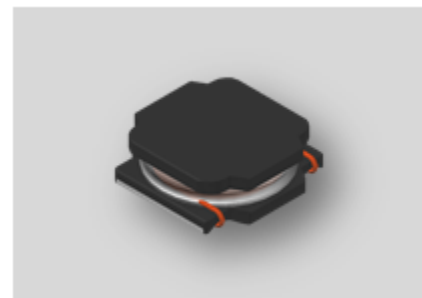


Features

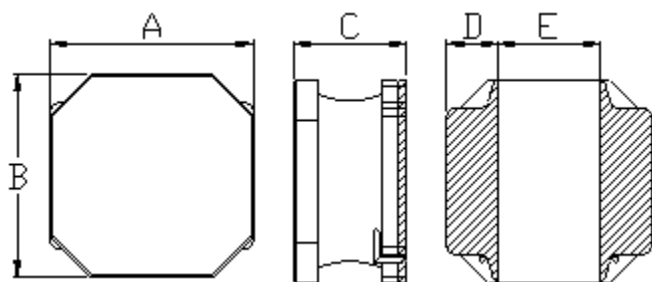
- ▶ High current and low profile.
- ▶ Available tape and reel for auto insertion
- ▶ Simple and Shield structure.
- ▶ Halogen-Free

Applications

- ▶ Car navigation, car stereo and car accessories only
(Not available for use related to driving, curving, stopping, and the other safety.)

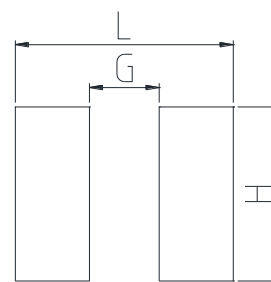


Dimension (Unit:mm)



| A | B | C | D | E |
|---------|---------|----------|---------|---------|
| 4.0±0.2 | 4.0±0.2 | 1.8 Max. | 1.2±0.2 | 1.6±0.2 |

Land Pattern (Unit:mm)



| L | G | H |
|-----|-----|-----|
| 4.1 | 1.5 | 3.7 |

Specifications

| Part Number | Inductance (uH) | Tolerance (±) | DCR(mΩ) ±20% | IDC1(A) Max. | IDC2(A) Max. | Test Frequency (Hz) |
|--------------------|-----------------|---------------|--------------|--------------|--------------|---------------------|
| CMI-DSS4018NH-1R0N | 1.0 | 30% | 25 | 4.20 | 2.00 | 100k |
| CMI-DSS4018NH-1R5N | 1.5 | 30% | 30 | 3.35 | 1.80 | 100k |
| CMI-DSS4018NH-2R2M | 2.2 | 20% | 45 | 2.70 | 1.65 | 100k |
| CMI-DSS4018NH-3R3M | 3.3 | 20% | 70 | 2.45 | 1.23 | 100k |
| CMI-DSS4018NH-4R7M | 4.7 | 20% | 90 | 1.70 | 1.20 | 100k |
| CMI-DSS4018NH-6R8M | 6.8 | 20% | 110 | 1.45 | 1.06 | 100k |
| CMI-DSS4018NH-100M | 10 | 20% | 180 | 1.30 | 0.84 | 100k |
| CMI-DSS4018NH-150M | 15 | 20% | 250 | 0.94 | 0.65 | 100k |
| CMI-DSS4018NH-220M | 22 | 20% | 360 | 0.80 | 0.59 | 100k |
| CMI-DSS4018NH-330M | 33 | 20% | 530 | 0.56 | 0.49 | 100k |
| CMI-DSS4018NH-470M | 47 | 20% | 650 | 0.57 | 0.42 | 100k |
| CMI-DSS4018NH-680M | 68 | 20% | 1000 | 0.47 | 0.32 | 100k |

- All specifications are subject to change without notice.
- Update date : 2018.04.11

| Part Number | Inductance (uH) | Tolerance (±) | DCR(mΩ) ±20% | IDC1(A) Max. | IDC2(A) Max. | Test Frequency (Hz) |
|--------------------|-----------------|---------------|--------------|--------------|--------------|---------------------|
| CMI-DSS4018NH-101M | 100 | 20% | 1750 | 0.40 | 0.25 | 100k |
| CMI-DSS4018NH-151M | 150 | 20% | 2500 | 0.31 | 0.22 | 100k |
| CMI-DSS4018NH-221M | 220 | 20% | 4000 | 0.27 | 0.17 | 100k |
| CMI-DSS4018NH-331M | 330 | 20% | 6500 | 0.20 | 0.14 | 100k |
| CMI-DSS4018NH-151M | 150 | 20% | 2500 | 0.31 | 0.22 | 100k |
| | | | | | | |
| | | | | | | |
| | | | | | | |
| | | | | | | |
| | | | | | | |
| | | | | | | |
| | | | | | | |
| | | | | | | |

- IDC1: When based on the inductance change rate (approximately 30% below in the initial value)
- IDC2: When based on the temperature increase (Temperature increase of approximately 40°C by self heating)
- Operating Temperature Range(including self temperature) : -40°C ~ +105 °C

| | | |
|-------------------------------|-------------------|--|
| Ilisan Sales Office (KOREA) | +82)31-904-1444 | coilmaster@coilmaster.com |
| H.K Sales Office (HONGKONG) | +852)2711-5551 | coilmaster@coilmaster.com |
| Shenzhen Sales Office (CHINA) | +86)755-8663-6929 | coilmaster@coilmaster.com |
| LA Sales Office (USA) | +1)866-446-3586 | coilmaster@coilmaster.com |
| Hungary Sales office (EUROPE) | +36)30-913-7706 | coilmaster@coilmaster.com |