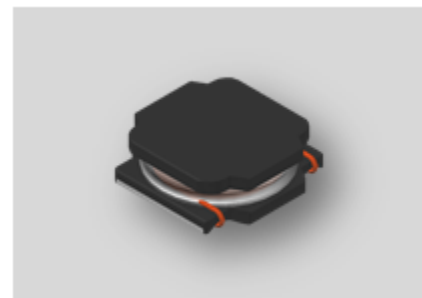


# CMI-CDSS5040NH-SERIES



## Features

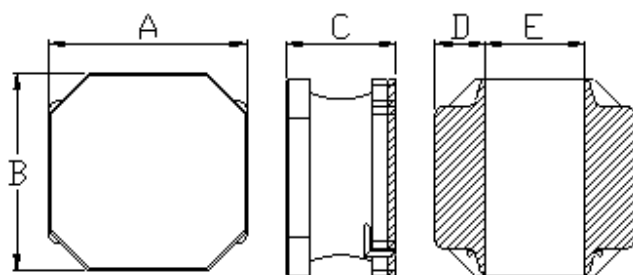
- ▶ High current and low profile.
- ▶ Available tape and reel for auto insertion
- ▶ Simple and Shield structure.
- ▶ Halogen-Free
- ▶ AEC-Q200 qualified



## Applications

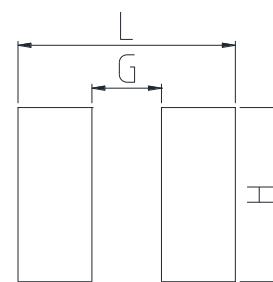
- ▶ Car navigation, car stereo and car accessories only  
(Not available for use related to driving, curving, stopping, and the other safety.)

Dimension (Unit:mm)



A	B	C	D	E
5.0±0.2	5.0±0.2	4.0 Max.	1.5±0.2	2.0±0.2

Land Pattern (Unit:mm)



L	G	H
5.1	2.3	4.2

## Specifications

Part Number	Inductance (uH)	Tolerance (±)	DCR(mΩ) ±20%	IDC1(A) Max.	IDC2(A) Max.	Test Frequency (Hz)
CMI-CDSS5040NH-1R0N	1.0	30%	12	7.35	4.90	100k
CMI-CDSS5040NH-1R2N	1.2	30%	15	6.50	4.30	100k
CMI-CDSS5040NH-1R5N	1.5	30%	16	6.30	4.15	100k
CMI-CDSS5040NH-2R2N	2.2	30%	19	4.90	3.80	100k
CMI-CDSS5040NH-3R3N	3.3	30%	24	3.95	3.40	100k
CMI-CDSS5040NH-4R7M	4.7	20%	30	3.50	3.00	100k
CMI-CDSS5040NH-5R6M	5.6	20%	35	3.00	2.80	100k
CMI-CDSS5040NH-6R8M	6.8	20%	43	2.90	2.50	100k
CMI-CDSS5040NH-100M	10	20%	64	2.35	2.10	100k
CMI-CDSS5040NH-150M	15	20%	86	2.00	2.00	100k
CMI-CDSS5040NH-220M	22	20%	129	1.60	1.50	100k
CMI-CDSS5040NH-330M	33	20%	188	1.30	1.20	100k
CMI-CDSS5040NH-470M	47	20%	2722	1.10	1.00	100k

• You can also contact us by e-mail : [coilmaster@coilmaster.com](mailto:coilmaster@coilmaster.com)

- All specifications are subject to change without notice.
- Update date : 2018.04.11

Part Number	Inductance (uH)	Tolerance (±)	DCR(mΩ) ±20%	IDC1(A) Max.	IDC2(A) Max.	Test Frequency (Hz)
CMI-CDSS5040NH-680M	68	20%	400	0.90	0.80	100k
CMI-CDSS5040NH-101M	100	20%	560	0.75	0.70	100k
CMI-CDSS5040NH-151M	150	20%	750	0.65	0.60	100k
CMI-CDSS5040NH-221M	220	20%	1280	0.40	0.38	100k
CMI-CDSS5040NH-102M	1000	20%	6200	0.25	0.25	100k
CMI-CDSS5040NH-222M	2200	20%	13000	0.10	0.10	100k

- IDC1: When based on the inductance change rate (approximately 30% below in the initial value)
- IDC2: When based on the temperature increase (Temperature increase of approximately 40°C by self heating)
- Operating Temperature Range(including self temperature) : -40°C ~ +105 °c

---

Ilsan Sales Office (KOREA)	+82)31-904-1444	H.K Sales Office (HONGKONG)	+852)2711-5551
Shenzhen Sales Office (CHINA)	+86)755-8663-6929	LA Sales Office (USA)	+1)866-446-3586
Hungary Sales office (EUROPE)	+36)30-913-7706		

- **You can also contact us by e-mail : [coilmaster@coilmaster.com](mailto:coilmaster@coilmaster.com)**
- All specifications are subject to change without notice.
- Update date : 2018.04.11