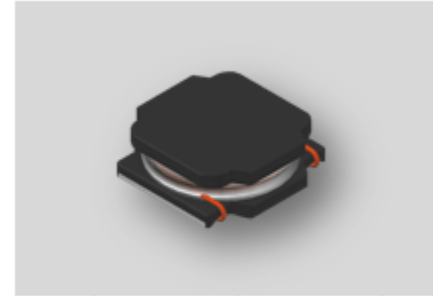


CMI-CDSS8040NH-SERIES



Features

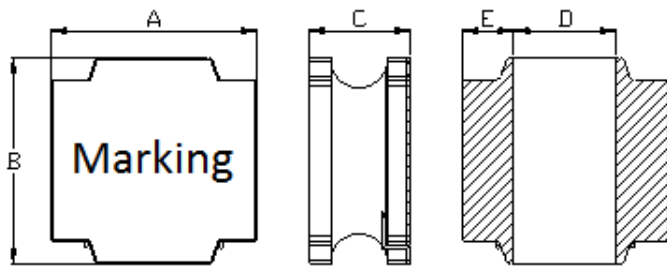
- ▶ High current and low profile.
- ▶ Available tape and reel for auto insertion
- ▶ Simple and Shield structure.
- ▶ RoHS compliant
- ▶ AEC-Q200 qualified.
- ▶ Halogen-Free



Applications

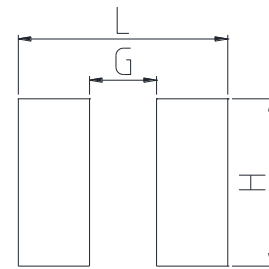
- ▶ Car navigation, car stereo and car accessories only
(Not available for use related to driving, curving, stopping, and the other safety.)

Dimension (Unit:mm)



A	B	C	D	E
8.0±0.3	8.0±0.3	4.2 Max.	2.1±0.3	3.8±0.3

Land Pattern (Unit:mm)



L	G	H
8.2	3.8	7.5

Specifications

Part Number	Inductance (uH)	Tolerance (±)	DCR(mΩ) ±20%	IDC1(A) Max.	IDC2(A) Max.	Test Frequency (Hz)
CMI-CDSS8040NH-R82N	0.82	30%	8	13.80	6.30	100k
CMI-CDSS8040NH-1R0N	1.0	30%	8	9.85	6.30	100k
CMI-CDSS8040NH-1R5N	1.5	30%	10	8.15	5.65	100k
CMI-CDSS8040NH-2R2N	2.2	30%	12	7.10	5.15	100k
CMI-CDSS8040NH-3R3N	3.3	30%	17	6.50	4.40	100k
CMI-CDSS8040NH-4R7N	4.7	30%	19	5.90	4.10	100k
CMI-CDSS8040NH-6R8M	6.8	20%	24	4.55	3.60	100k
CMI-CDSS8040NH-8R2M	8.2	20%	26	4.20	3.45	100k
CMI-CDSS8040NH-100M	10	20%	42	3.60	3.30	100k
CMI-CDSS8040NH-150M	15	20%	47	2.95	2.60	100k
CMI-CDSS8040NH-180M	18	20%	53	2.70	2.40	100k
CMI-CDSS8040NH-220M	22	20%	69	2.40	2.10	100k
CMI-CDSS8040NH-330M	33	20%	97	2.05	1.80	100k

- You can also contact us by e-mail : coilmaster@coilmaster.com
- All specifications are subject to change without notice.
- Update date : 2018.04.11

Part Number	Inductance (uH)	Tolerance (±)	DCR(mΩ) ±20%	IDC1(A) Max.	IDC2(A) Max.	Test Frequency (Hz)
CMI-CDSS8040NH-470M	47	20%	136	1.75	1.55	100k
CMI-CDSS8040NH-680M	68	20%	196	1.45	1.25	100k
CMI-CDSS8040NH-820M	82	20%	225	1.30	1.15	100k
CMI-CDSS8040NH-101M	100	20%	290	1.15	1.00	100k
CMI-CDSS8040NH-121M	120	20%	334	1.05	0.95	100k
CMI-CDSS8040NH-151M	150	20%	410	1.10	0.85	100k
CMI-CDSS8040NH-221M	220	20%	599	0.85	0.80	100k
CMI-CDSS8040NH-331M	330	20%	889	0.68	0.64	100k
CMI-CDSS8040NH-471M	470	20%	1260	0.60	0.54	100k
CMI-CDSS8040NH-681M	680	20%	2040	0.50	0.45	100k
CMI-CDSS8040NH-102M	1000	20%	2800	0.40	0.35	100k

- IDC1: When based on the inductance change rate (approximately 30% below in the initial value)
- IDC2: When based on the temperature increase (Temperature increase of approximately 40°C by self heating)
- Operating Temperature Range(including self temperature) : -40°C ~ +105 °C

Ilsan Sales Office (KOREA) +82)31-904-1444
 Shenzhen Sales Office (CHINA) +86)755-8663-6929
 Hungary Sales office (EUROPE) +36)30-913-7706

H.K Sales Office (HONGKONG) +852)2711-5551
 LA Sales Office (USA) +1)866-446-3586

▪ You can also contact us by e-mail : coilmaster@coilmaster.com

- All specifications are subject to change without notice.
- Update date : 2018.04.11

www.coilmaster.com

- **You can also contact us by e-mail : coilmaster@coilmaster.com**
- All specifications are subject to change without notice.
- Update date : 2018.04.11