

CMI-CMMPP10040MH-SC SERIES

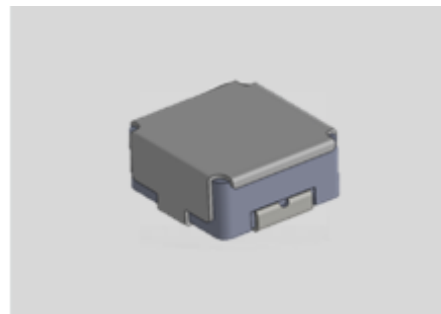


Features

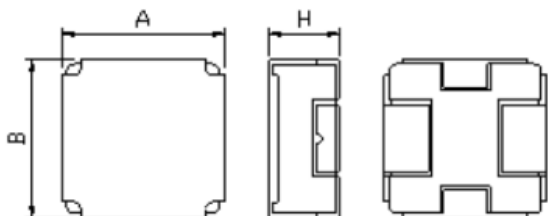
- ▶ High current and low profile.
- ▶ Metal powder molding type for EMC protection.
- ▶ Available tape and reel for auto insertion.
- ▶ RoHS compliant.

Applications

- ▶ For DC/DC converter(LED/OLED TV, TABLAT, DISPLAY, GRAPHIC CARD, NOTE PC, SETTOP, etc)
- ▶ Equipment using for automobiles (ECM, airbags, headlights, Electronic Powder steering, motors, ABS, other)

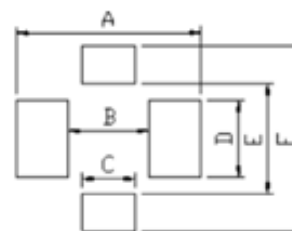


Dimension (Unit:mm)



A	B	H
11.1±0.3	10.4±0.3	4.3Max

Land Pattern (Unit:mm)



A	B	C	D	E	F
13.6	5.4	3.5	4.1	5.4	11.4

Specifications

Part Number	Inductance (uH) ±20%	DCR(mohm) Max(Typ)	IDC1(A) Typ	IDC2(A) Typ	Test Frequency (Hz)
CMI-CMMPP10040MH-2R2M-SC	2.2	9.6(8.0)	23.0	11.0	1M

- IDC1: When based on the inductance change rate (approximately 30% below in the initial value)
- IDC2: When based on the temperature increase (Temperature increase of approximately 40°C by self heating)
- Operating Temperature Range(including self temperature) : -40°C ~ +165 °C

Ilsan Sales Office (KOREA)
 H.K Sales Office (HongKong)
 Shenzhen Sales Office (CHINA)
 LA Sales Office (USA)
 Hungary Sales office (EUROPE)

+82)31-904-1444
 +852)2711-5551
 +0755-8663-6929
 +1)866-446-3586
 +36)30-521-7818

coilmaster@coilmaster.com
coilmaster@coilmaster.com
kimha@coilmaster.com
markyang@coilmaster.com
coilmaster@coilmaster.com