

CMI-CMMPP12055LL-SERIES

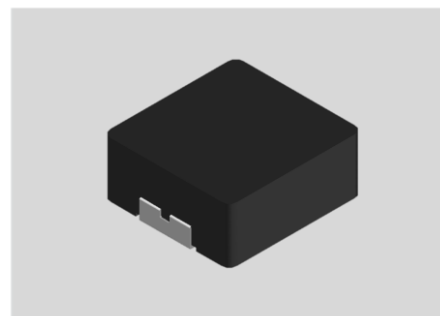


Features

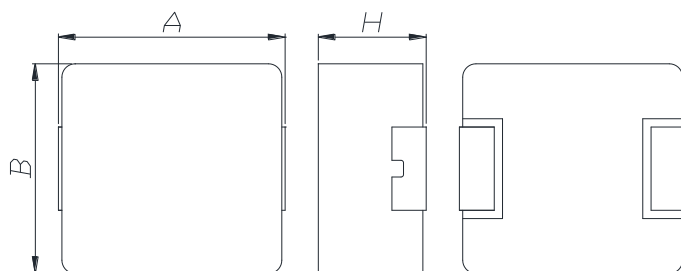
- ▶ High current and low profile.
- ▶ Metal powder molding type for EMC protection.
- ▶ Available tape and reel for auto insertion.
- ▶ RoHS compliant

Applications

- ▶ Equipment using for automobiles (ECM, airbags, headlights, electronic Powder steering, motors, ABS, other)

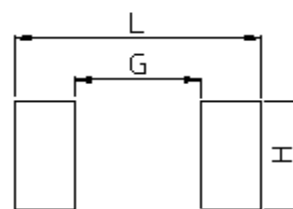


Dimension (Unit:mm)



A	B	H
12.65±0.5	12.6±0.4	5.5 Max

Land Pattern (Unit:mm)



L	G	H
14.75	8.28	4.95

Specifications

Part Number	Inductance (uH) ±20%	DCR(mohm) Max(Typ)	IDC1(A) Typ	IDC2(A) Typ	Test Frequency (Hz)
CMI-CMMPP12055LL-150M	15	27.0(22.5)	8.70(9.50)	8.00(8.50)	1M
CMI-CMMPP12055LL-220M	22	39.6(33.0)	10.00(11.00)	7.50(8.00)	1M
CMI-CMMPP12055LL-330M	33	54.0(45.0)	7.50(8.30)	6.00(6.50)	1M
CMI-CMMPP12055LL-470M	47	66.0(55.0)	6.80(7.50)	5.00(5.50)	1M

- IDC1: When based on the inductance change rate (approximately 30% below in the initial value)
- IDC2: When based on the temperature increase (Temperature increase of approximately 40°C by self heating)
- Operating Temperature Range(including self temperature) : -40°C ~ +165 °C

Ilsan Sales Office (KOREA)

+82)31-904-1444

coilmaster@coilmaster.com

H.K Sales Office (HONGKONG)

+852)2711-5551

coilmaster@coilmaster.com

Shenzhen Sales Office (CHINA)

+86)755-8663-6929

coilmaster@coilmaster.com

LA Sales Office (USA)

+1)866-446-3586

coilmaster@coilmaster.com

Hungary Sales office (EUROPE)

+36)30-913-7706

coilmaster@coilmaster.com

- All specifications are subject to change without notice.
- Update date : 2017.10.14