

CMI-CMMPP5030HL-SERIES

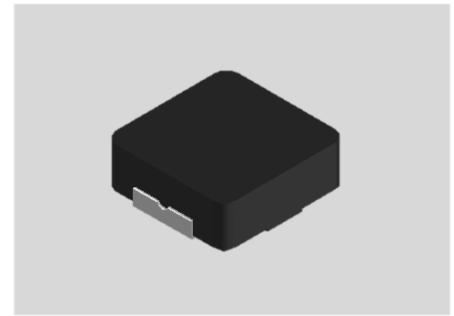


Features

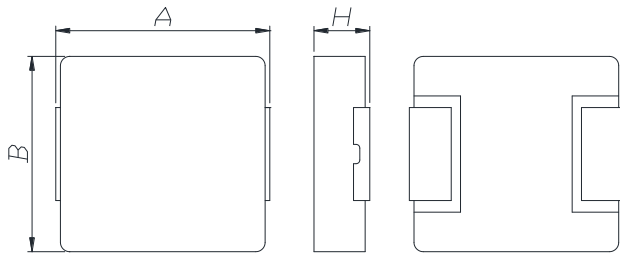
- ▶ High current and low profile.
- ▶ Metal powder molding type for EMC protection.
- ▶ Available tape and reel for auto insertion.
- ▶ RoHS compliant

Applications

- ▶ For DC/DC converter(LED/OLED TV, TABLAT, DISPLAY, GRAPHIC CARD, NOTE PC, SETTOP, etc.)
- ▶ Equipment using for automobiles (ECM, airbags, headlights, electronic Powder steering, motors, ABS, other)

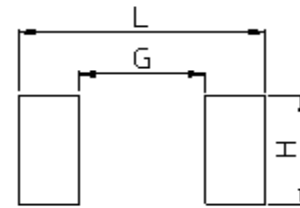


Dimension (Unit:mm)



A	B	H
5.5±0.35	5.2±0.25	3.0 Max

Land Pattern (Unit:mm)



L	G	H
6.0	2.2	2.5

Specifications

Part Number	Inductance (uH) ±20%	DCR(mohm) Max(Typ)	IDC1(A) Max(Typ)	IDC2(A) Max(Typ)	Test Frequency (Hz)
CMI-CMMPP5030HL-R68M	0.68	7.8(6.5)	13.00(15.00)	12.00(13.00)	1M
CMI-CMMPP5030HL-1R0M	1.0	12.0(10.0)	10.00(11.00)	8.50(9.50)	1M
CMI-CMMPP5030HL-3R3M	3.3	36.0(30.0)	7.50(8.00)	5.70(6.00)	1M
CMI-CMMPP5030HL-4R7M	4.7	44.4(37.0)	6.50(7.00)	5.00(5.40)	1M

- IDC1: When based on the inductance change rate (approximately 30% below in the initial value)
- IDC2: When based on the temperature increase (Temperature increase of approximately 40°C by self heating)
- Operating Temperature Range(including self temperature) : -40°C ~ +165 °C

Ilsan Sales Office (KOREA)
 H.K Sales Office (HongKong)
 Shenzhen Sales Office (CHINA)
 LA Sales Office (USA)
 Hungary Sales office (EUROPE)

+82)31-904-1444
 +852)2711-5551
 +0755-8663-6929
 +1)866-446-3586
 +36)30-521-7818

coilmaster@coilmaster.com
coilmaster@coilmaster.com
kimha@coilmaster.com
markyang@coilmaster.com
coilmaster@coilmaster.com

- All specifications are subject to change without notice.
- Update date : 2017.11.03