

CME-CSCF4532B



Features

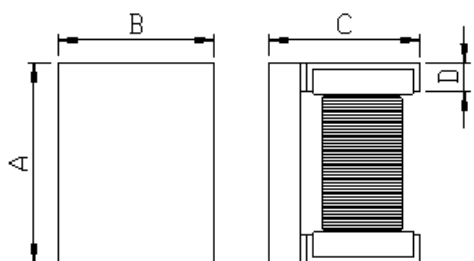
- ▶ High common mode impedance at high frequency effects
Excellent noise suppression performance.
- ▶ Realizes small size and low profile.
- ▶ RoHS compliant.
- ▶ High reliability test meet AEC-Q200.

Applications

- ▶ CAN-BUS, FAXs, modems, ISDNs, etc.

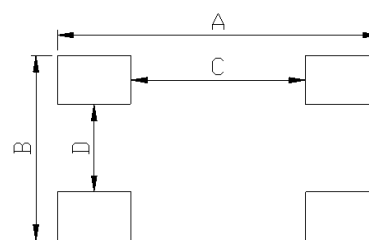


Dimension (Unit:mm)



| A | B | C | D |
|---------|---------|---------|---------|
| 4.5±0.2 | 3.2±0.2 | 2.8±0.2 | 0.7±0.1 |

Land Pattern (Unit:mm)



| A | B | C | D |
|-----|-----|-----|-----|
| 5.9 | 3.4 | 3.2 | 1.6 |

Specifications

| Part Number | Inductance (μH) | Impedance (Ω) Min.(Typ.) | DCR (Ω) Max. | IDC1 (mA) Max. | Insulation Resistance (MΩ) Min. | Rated Voltage (V) Max. |
|----------------------|-----------------|--------------------------|--------------|----------------|---------------------------------|------------------------|
| CME-CSCF4532B-110T25 | 11 | 300(600) | 0.6 | 250 | 10 | 50 |
| CME-CSCF4532B-220T20 | 22 | 500(1200) | 1.0 | 200 | 10 | 50 |
| CME-CSCF4532B-510T20 | 51 | 1000(2800) | 1.0 | 200 | 10 | 50 |
| CME-CSCF4532B-101T15 | 100 | 2000(5800) | 2.0 | 150 | 10 | 50 |
| | | | | | | |
| | | | | | | |
| | | | | | | |
| | | | | | | |

- Inductance test condition : 100 kHz (L tolerance+50/-30%)
- Impedance test condition : 10 MHz
- Operating Temperature Range(including self temperature) : -40°c ~ +150 °c

Ilsan Sales Office (KOREA) +82)31-904-1444
 Shenzhen Sales Office (CHINA) +86)755-8663-6929
 Hungary Sales office (EUROPE) +36)30-913-7706

H.K Sales Office (HONGKONG) +852)2711-5551
 LA Sales Office (USA) +1)866-446-3586

▪ You can also contact us by e-mail : coilmaster@coilmaster.com

- All specifications are subject to change without notice.
- Update date : 2015.11.18

www.coilmaster.com