

CME-CSCF4532L



Features

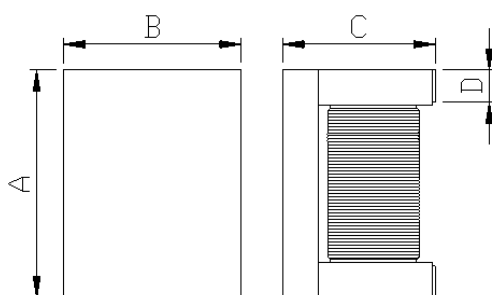
- ▶ High common mode impedance at high frequency effects
Excellent noise suppression performance.
- ▶ Realizes small size and low profile.
- ▶ High reliability test meet AEC-Q200

Applications

- ▶ CAN-BUS, FAXs, modems, ISDNs, etc.

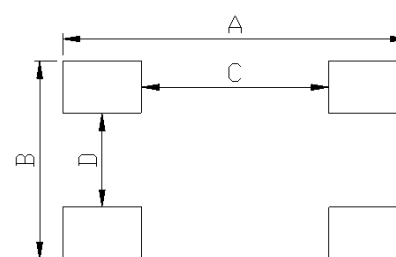


Dimension (Unit:mm)



A	B	C	D
4.5±0.2	3.2±0.2	2.8±0.15	0.45 ref

Land Pattern (Unit:mm)



A	B	C	D
5.5	2.1	3.9	0.7

Specifications

Part Number	Inductance (μH)	DCR (Ω) Max.	IDC1 (mA) Max.	Insulation Resistance (MΩ) Min.	Rated Voltage (V) Max.
CME-CSCF4532L-201T10	200	4.5	100	10	50

- Inductance test condition : 100 kHz (L tolerance+50/-30%)
- Operating Temperature Range(including self temperature) : -40°c ~ +150 °c

Ilisan Sales Office (KOREA)
H.K Sales Office (HongKong)
Shenzhen Sales Office (CHINA)
LA Sales Office (USA)
Hungary Sales office (EUROPE)

+82)31-904-1444
+852)2711-5551
+0755-8663-6929
+1)866-446-3586
+36)30-521-7818

coilmaster@coilmaster.com
coilmaster@coilmaster.com
kimha@coilmaster.com
markyang@coilmaster.com
coilmaster@coilmaster.com

- All specifications are subject to change without notice.
- Update date : 2015.11.18