

# CME-CSCF4532R



## Features

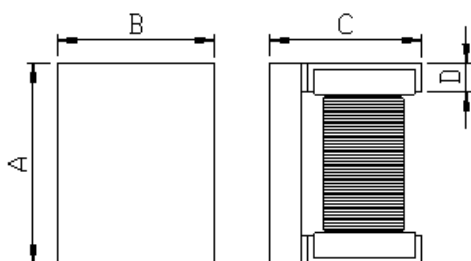
- ▶ High common mode impedance at high frequency effects  
Excellent noise suppression performance.
- ▶ Realizes small size and low profile.
- ▶ RoHS compliant.
- ▶ High reliability test meet AEC-Q200.

## Applications

- ▶ CAN-BUS, FAXs, modems, ISDNs, etc.

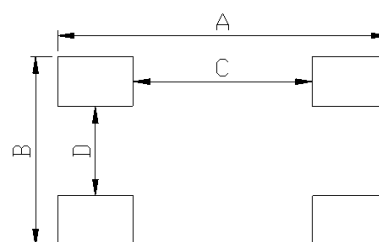


Dimension (Unit:mm)



A	B	C	D
4.5±0.2	3.2±0.2	2.8±0.2	0.7±0.1

Land Pattern (Unit:mm)



A	B	C	D
5.9	3.4	3.2	1.6

## Specifications

Part Number	Inductance (μH)	Stray Inductance (μH) Typ.	Impedance (Ω) Min.(Typ.)	DCR (Ω) Max.	IDC1 (mA) Max.	Insulation Resistance (MΩ) Min.	Rated Voltage (V) Max.
CME-CSCF4532R-101T20	100	0.2	2200(5500)	1.5	200	10	50

- Inductance test condition : 100 kHz ( L tolerance+50/-30% )
- Impedance test condition : 10 MHz
- Operating Temperature Range(including self temperature) : -40°c ~ +150 °c

Ilisan Sales Office (KOREA) +82)31-904-1444  
 Shenzhen Sales Office (CHINA) +86)755-8663-6929  
 Hungary Sales office (EUROPE) +36)30-913-7706

H.K Sales Office (HONGKONG) +852)2711-5551  
 LA Sales Office (USA) +1)866-446-3586

• You can also contact us by e-mail : [coilmaster@coilmaster.com](mailto:coilmaster@coilmaster.com)

- All specifications are subject to change without notice.
- Update date : 2015.11.18

[www.coilmaster.com](http://www.coilmaster.com)