

# CMI-CSPC9H45NH-SERIES



## Features

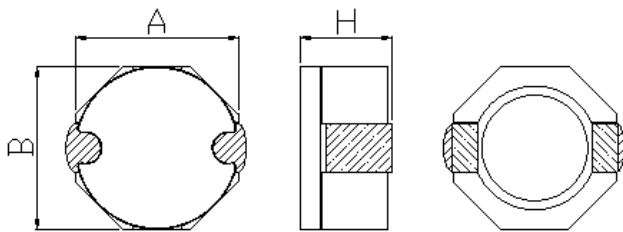
- ▶ SMD inductor
- ▶ It corresponds to high current.
- ▶ Simple and Shield structure.
- ▶ Available tape and reel for auto insertion.



## Applications

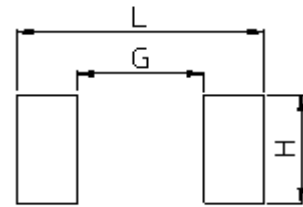
- ▶ For DC/DC converter , AV equipment, digital consumer electronics.

### Dimension (Unit:mm)



A	B	H
9.5±0.3	8.0±0.3	4.5Max

### Land Pattern (Unit:mm)



L	G	H
10.1	6.1	2.8

## Specifications

Part Number	Inductance (uH)	Tolerance (±)	DCR(mohm) ±20%	IDC1(A) Max.	IDC2(A) Max.
CMI-CSPC9H45NH-1R8N	1.8	30%	15	8.00	
CMI-CSPC9H45NH-4R7M	4.7	20%	28	4.50	
CMI-CSPC9H45NH-100M	10	20%	35	3.00	
CMI-CSPC9H45NH-220M	22	20%	75	2.00	

- Inductance Tested at 100kHz, 1Vrms(20 °c)
- IDC1: When based on the inductance change rate (approximately 30% below in the initial value)
- IDC2: When based on the temperature increase (Temperature increase of approximately 40°c by self heating)
- Operating Temperature Range(including self temperature) : -40°c ~ +150 °c

Ilisan Sales Office (KOREA)  
 H.K Sales Office (HongKong)  
 Shenzhen Sales Office (CHINA)  
 LA Sales Office (USA)  
 Hungary Sales office (EUROPE)

+82)31-904-1444  
 +852)2711-5551  
 +0755-8663-6929  
 +1)866-446-3586  
 +36)30-521-7818

[coilmaster@coilmaster.com](mailto:coilmaster@coilmaster.com)  
[coilmaster@coilmaster.com](mailto:coilmaster@coilmaster.com)  
[kimha@coilmaster.com](mailto:kimha@coilmaster.com)  
[markyang@coilmaster.com](mailto:markyang@coilmaster.com)  
[coilmaster@coilmaster.com](mailto:coilmaster@coilmaster.com)

- All specifications are subject to change without notice.
- Update date : 2016.04.22

[www.coilmaster.com](http://www.coilmaster.com)