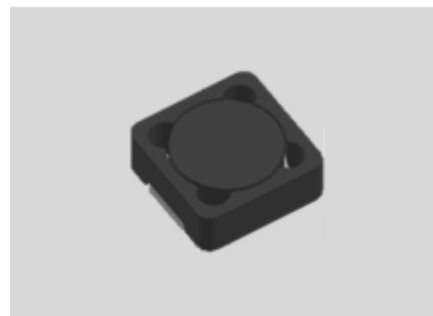


# CMI-CSSB12060NH-SERIES-B



## Features

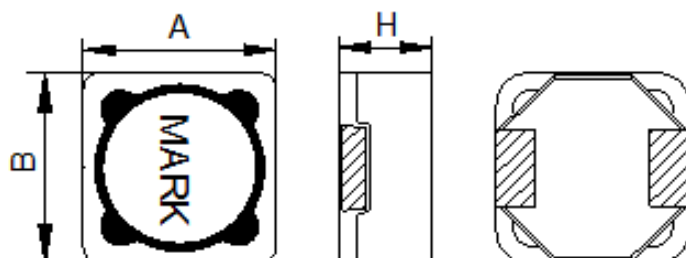
- ▶ SMD inductor.
- ▶ It corresponds to high current.
- ▶ Available tape and reel for auto insertion
- ▶ Simple and Shield structure.
- ▶ AEC-Q200 qualified
- ▶ Halogen-Free



## Applications

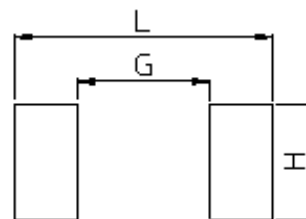
- ▶ Equipment using for automotive  
(ECM, airbags, headlights, electronic powder steering, motors, ABS, other)

Dimension (Unit:mm)



A	B	H
12.3±0.2	12.3±0.2	6.0 Max

Land Pattern (Unit:mm)



L	G	H
13.8	6.1	5.5

## Specifications

Part Number	Inductance (uH) ±20%	DCR(mohm) ±20%	IDC1(A) Max.	IDC2(A) Max.	Test Frequency (Hz)
CMI-CSSB12060NH-220M-B	2.2	30	4.10	4.40	100k
CMI-CSSB12060NH-101M-B	100	130	1.90	2.20	100k

- IDC1: When based on the inductance change rate (approximately 30% below in the initial value)
- IDC2: When based on the temperature increase (Temperature increase of approximately 40°C by self heating)
- Operating Temperature Range(including self temperature) : -40°C ~ +165 °C

Ilisan Sales Office (KOREA) +82)31-904-1444  
 Shenzhen Sales Office (CHINA) +86)755-8663-6929  
 Hungary Sales office (EUROPE) +36)30-913-7706

H.K Sales Office (HONGKONG) +852)2711-5551  
 LA Sales Office (USA) +1)866-446-3586

• You can also contact us by e-mail : [coilmaster@coilmaster.com](mailto:coilmaster@coilmaster.com)

- All specifications are subject to change without notice.
- Update date : 2015.11.18

[www.coilmaster.com](http://www.coilmaster.com)