

CMI-CSSB12060NH-SERIES

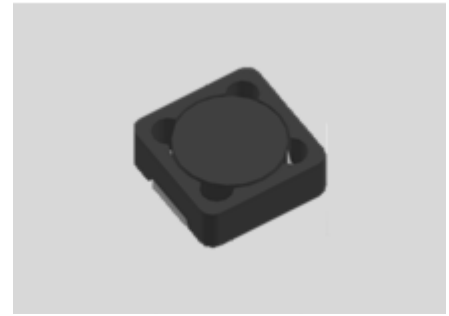


Features

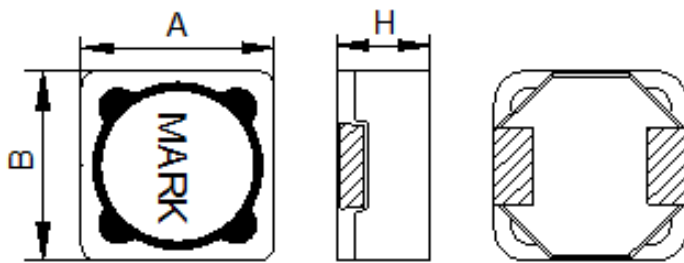
- ▶ SMD inductor.
- ▶ It corresponds to high current.
- ▶ Available tape and reel for auto insertion
- ▶ Simple and Shield structure.

Applications

- ▶ ECU(Engine Control Unit), BSM(Break System module).
- ▶ DC-DC converter etc.

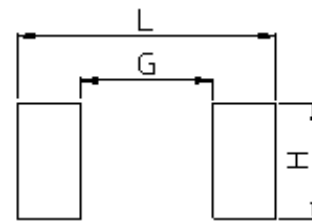


Dimension (Unit:mm)



A	B	H
12.3±0.2	12.3±0.2	6.0Max

Land Pattern (Unit:mm)



L	G	H
13.8	6.1	5.5

Specifications

Part Number	Inductance (uH) ±20%	DCR(mohm) ±20%	IDC1(A) Max.	IDC2(A) Max.	Test Frequency (Hz)
CMI-CSSB12060NH-220M	2.2	40	4.70	4.40	100k
CMI-CSSB12060NH-101M	100	165	2.20	2.20	100k

- IDC1: When based on the inductance change rate (approximately 30% below in the initial value)
- IDC2: When based on the temperature increase (Temperature increase of approximately 40°C by self heating)
- Operating Temperature Range(including self temperature) : -40°C ~ +165 °C

Ilsan Sales Office (KOREA)
 H.K Sales Office (HongKong)
 Shenzhen Sales Office (CHINA)
 LA Sales Office (USA)
 Hungary Sales office (EUROPE)

+82)31-904-1444
 +852)2711-5551
 +0755-8663-6929
 +1)866-446-3586
 +36)30-521-7818

coilmaster@coilmaster.com
coilmaster@coilmaster.com
kimha@coilmaster.com
markyang@coilmaster.com
coilmaster@coilmaster.com

- All specifications are subject to change without notice.
- Update date : 2015.11.18