

# CMI-CSSB12080NH-SERIES

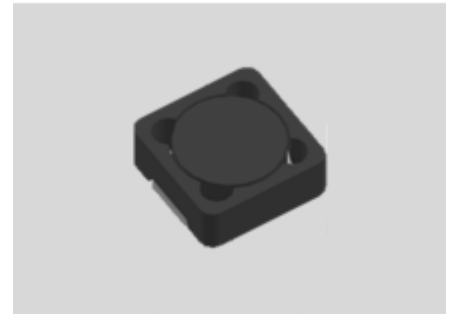


## Features

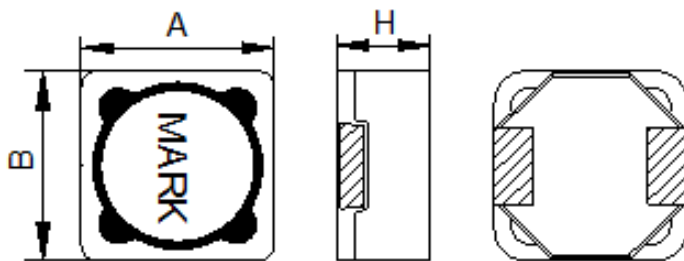
- ▶ SMD inductor.
- ▶ It corresponds to high current.
- ▶ Available tape and reel for auto insertion
- ▶ Simple and Shield structure.

## Applications

- ▶ ECU(Engine Control Unit), BSM(Break System module).
- ▶ DC-DC converter etc.

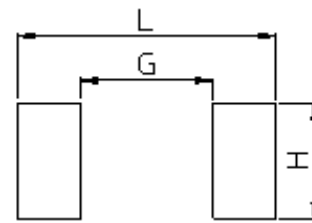


## Dimension (Unit:mm)



A	B	H
12.3±0.2	12.3±0.2	8.0Max

## Land Pattern (Unit:mm)



L	G	H
13.8	6.1	5.5

## Specifications

Part Number	Inductance (uH) ±20%	DCR(mohm) ±20%	IDC1(A) Max.	IDC2(A) Max.	Test Frequency (Hz)
CMI-CSSB12080NH-3R9M	3.9	15.4	11.20	10.10	100k
CMI-CSSB12080NH-100M	10	23	8.10	8.00	100k
CMI-CSSB12080NH-150M	15	33	6.80	6.60	100k
CMI-CSSB12080NH-820M	82	94	2.70	2.80	100k
CMI-CSSB12080NH-471M	470	480	1.20	1.40	100k

- IDC1: When based on the inductance change rate (approximately 30% below in the initial value)
- IDC2: When based on the temperature increase (Temperature increase of approximately 40°C by self heating)
- Operating Temperature Range(including self temperature) : -40°C ~ +165 °C

Ilisan Sales Office (KOREA)  
 H.K Sales Office (HongKong)  
 Shenzhen Sales Office (CHINA)  
 LA Sales Office (USA)  
 Hungary Sales office (EUROPE)

+82)31-904-1444  
 +852)2711-5551  
 +0755-8663-6929  
 +1)866-446-3586  
 +36)30-521-7818

[coilmaster@coilmaster.com](mailto:coilmaster@coilmaster.com)  
[coilmaster@coilmaster.com](mailto:coilmaster@coilmaster.com)  
[kimha@coilmaster.com](mailto:kimha@coilmaster.com)  
[markyang@coilmaster.com](mailto:markyang@coilmaster.com)  
[coilmaster@coilmaster.com](mailto:coilmaster@coilmaster.com)

- All specifications are subject to change without notice.
- Update date : 2015.11.18