

CMI-CSSB7045NH-SERIES

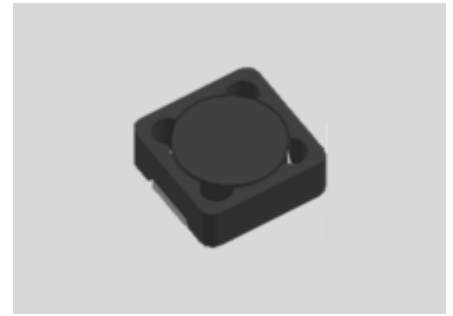


Features

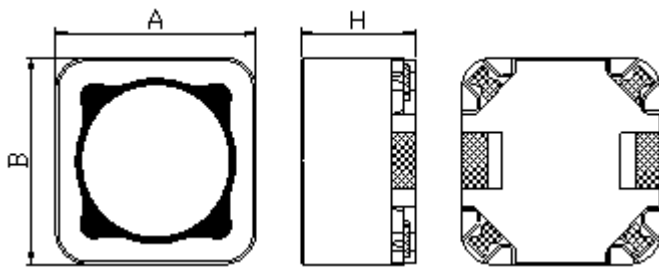
- ▶ SMD inductor.
- ▶ It corresponds to high current.
- ▶ Available tape and reel for auto insertion
- ▶ Simple and Shield structure.

Applications

- ▶ ECU(Engine Control Unit), BSM(Break System module).
- ▶ DC-DC converter etc.

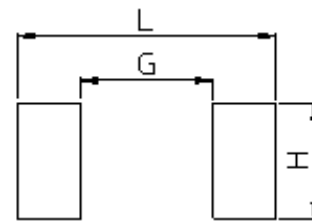


Dimension (Unit:mm)



A	B	H
7.3±0.3	7.3±0.3	4.5Max

Land Pattern (Unit:mm)



L	G	H
7.6	5.2	2.4

Specifications

Part Number	Inductance (uH) ±20%	DCR(mohm) ±20%	IDC1(A) Max.	IDC2(A) Max.	Test Frequency (Hz)
CMI-CSSB7045NH-1R0M	1.0	7	10.90	9.90	100k
CMI-CSSB7045NH-2R2M	2.2	11	7.70	7.50	100k
CMI-CSSB7045NH-100M	10	38	3.30	3.30	100k
CMI-CSSB7045NH-220M	22	81	2.30	2.90	100k
CMI-CSSB7045NH-151M	150	500	0.80	0.87	100k

- IDC1: When based on the inductance change rate (approximately 30% below in the initial value)
- IDC2: When based on the temperature increase (Temperature increase of approximately 40°C by self heating)
- Operating Temperature Range(including self temperature) : -40°C ~ +165 °C

Ilsan Sales Office (KOREA)
 H.K Sales Office (HongKong)
 Shenzhen Sales Office (CHINA)
 LA Sales Office (USA)
 Hungary Sales office (EUROPE)

+82)31-904-1444
 +852)2711-5551
 +0755-8663-6929
 +1)866-446-3586
 +36)30-521-7818

coilmaster@coilmaster.com
coilmaster@coilmaster.com
kimha@coilmaster.com
markyang@coilmaster.com
coilmaster@coilmaster.com

- All specifications are subject to change without notice.
- Update date : 2015.11.18