

# CMI-CSSP12080NH-SERIES



## Features

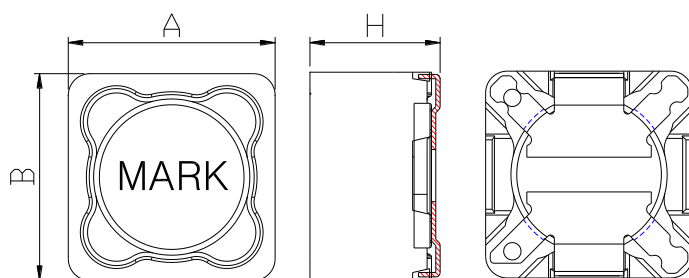
- ▶ Magnetic shield type wound inductor for power circuits.
- ▶ Available tape and reel for auto insertion.
- ▶ RoHS compliant
- ▶ Halogen-Free
- ▶ AEC-Q200 qualified.

## Applications

- ▶ Automotive-related equipment (Car navigation, car audio, Electronic power steering, headlights, other)

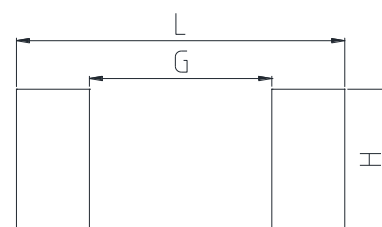


Dimension (Unit:mm)



A	B	H
12.0±0.3	12.0±0.3	8.0 Max

Land Pattern (Unit:mm)



L	G	H
12.6	7.0	5.4

## Specifications

Part Number	Inductance (uH)	Tolerance (±)	DCR (mohm) ±20%	IDC1(A) Max	IDC2(A) Max	Test Frequency (Hz)
CMI-CSSP12080NH-250M	25	20%	54	4.70	4.70	100k
CMI-CSSP12080NH-450M	45	20%	75	3.70	4.00	100k
CMI-CSSP12080NH-820M	82	20%	110	3.00	3.30	100k

- IDC1: When based on the inductance change rate (approximately 30% below in the initial value)
- IDC2: When based on the temperature increase (Temperature increase of approximately 40°C by self heating)
- Operating Temperature Range(including self temperature) : -40°C ~ +150°C

Ilsan Sales Office (KOREA) +82)31-904-1444  
 Shenzhen Sales Office (CHINA) +86)755-8663-6929  
 Hungary Sales office (EUROPE) +36)30-913-7706

H.K Sales Office (HONGKONG) +852)2711-5551  
 LA Sales Office (USA) +1)866-446-3586

• You can also contact us by e-mail : [coilmaster@coilmaster.com](mailto:coilmaster@coilmaster.com)

- All specifications are subject to change without notice.
- Update date : 2018.10.25

[www.coilmaster.com](http://www.coilmaster.com)