

CME-CPCF1213PN-1R0

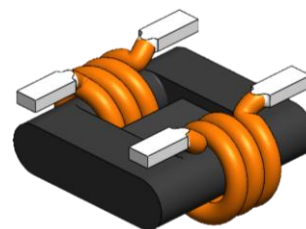
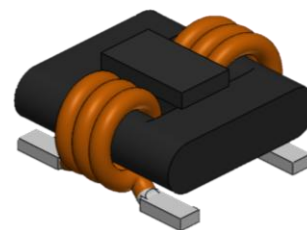
Common mode filter for Power line

Features

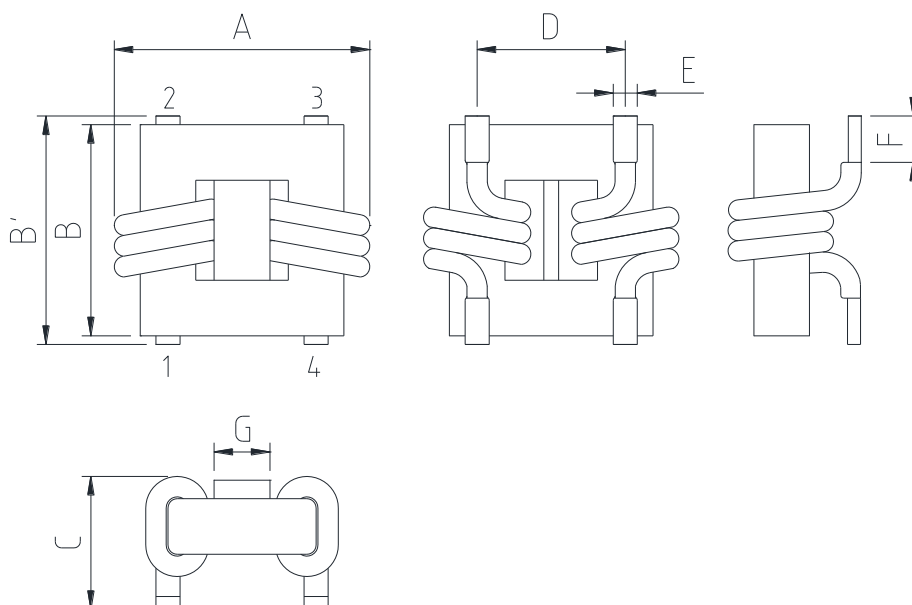
- ▶ Due to the compact design, it is suitable for surface mount.
- ▶ Custom options for inductance, impedance, DCR and current rating are available.
- ▶ Have achieved miniaturization while keeping Characteristics by adoption of exclusive square type closed magnetic cores.

Applications

- ▶ High current and high temperature applications
- ▶ DC/DC converters.
- ▶ EMI Filters
- ▶ Motor noise suppression.



Dimension (Unit:mm)



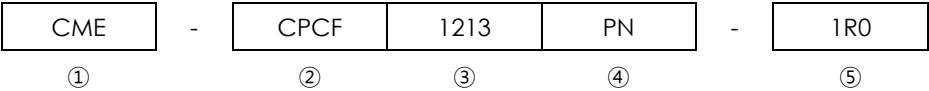
A	B'	B	C	D	E	F	G
13.0 ±1.0	12.5 ±0.5	11.5 ±0.2	7.5 Max.	8.0 Typ.	1.3 Typ.	2.5 Typ.	4.0 Typ.

• You can also contact us by e-mail : coilmaster@coilmaster.com

- All specifications are subject to change without notice.
- Update date : 2025.08.11 (Rev.0.5)

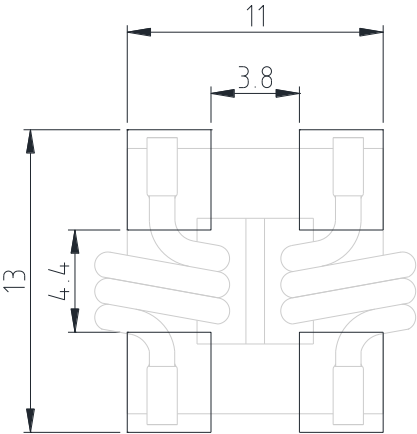
www.coilmaster.com

Regulation of part number

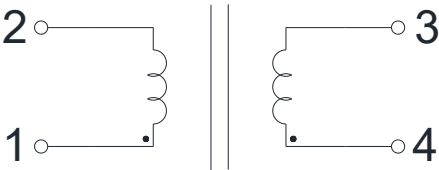


- ① CoilMaster's initial
- ② Series Name : Car Power line Common mode Filter
- ③ Size (unit:mm)
- ④ Type
- ⑤ Typical inductance value (1.0 uH)

Recommended Land Pattern



Circuit Diagram



Specifications

Part Number	Common mode Inductance (uH) +30%/-20%	DCR (mohm) Max.	Rated Current (A) Typ.	Self-Resonant Frequency (Hz)	Q Typ.
CME-CPCF1213PN-1R0	1.0	0.6	25	500M	35

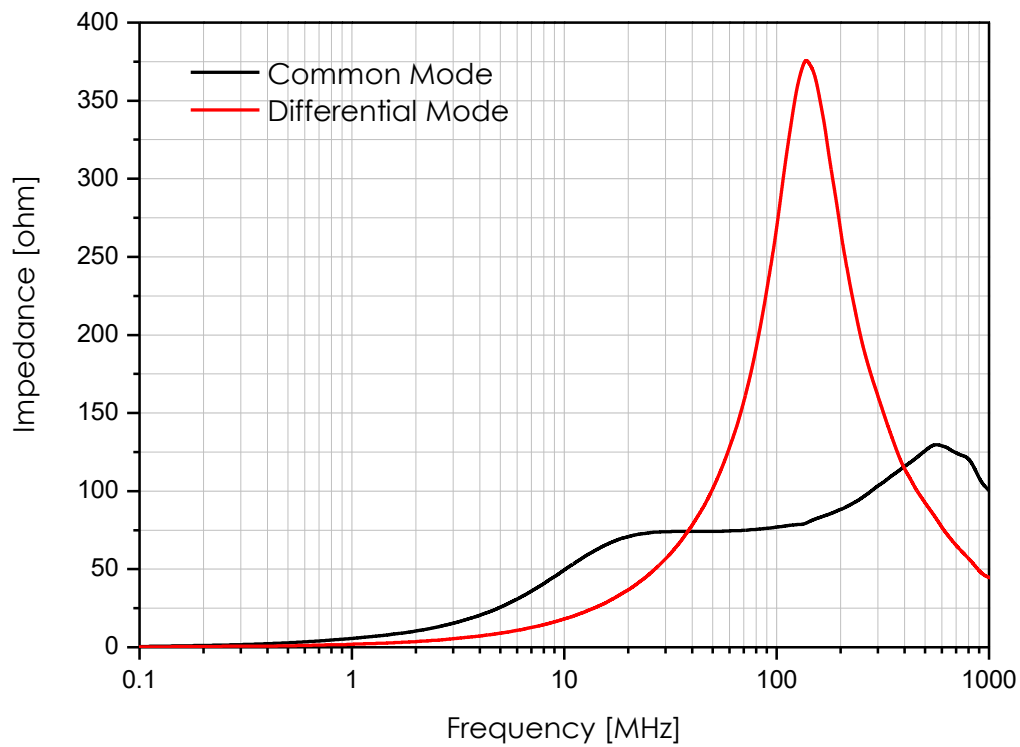
- Common mode Inductance, Q Test Frequency : 100kHz
- SRF and Q factor are measured under common mode condition.
- Operating Temperature Range(including self temperature) : -40°c ~ +165 °c

Note 1 : Circuit design, component placement, PCB trace size and thickness, airflow and other cooling. Provision all affect the part Temperature. Part temperature should be verified in the end application.

- You can also contact us by e-mail : coilmaster@coilmaster.com
- All specifications are subject to change without notice.
- Update date : 2025.08.11 (Rev.0.5)

Electrical characteristics

► Common Mode/Differential Mode Impedance VS. Frequency



▪ You can also contact us by e-mail : coilmaster@coilmaster.com

▪ All specifications are subject to change without notice.

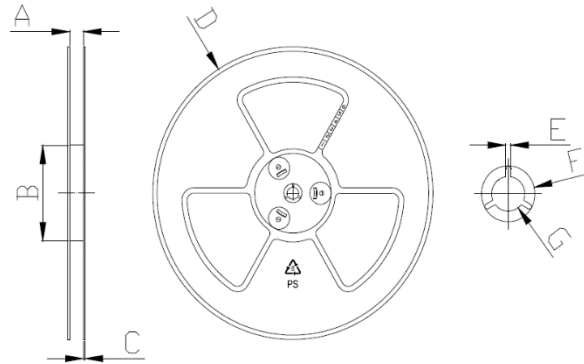
▪ Update date : 2025.08.11 (Rev.0.5)

www.coilmaster.com

Packaging

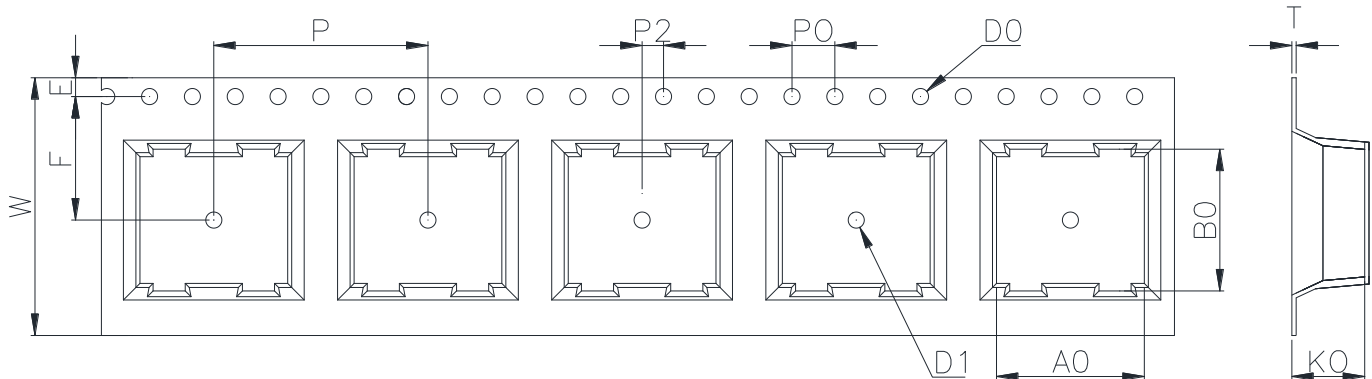
(1) Package quantity : 350 (pcs/reel)

(2) Reel Dimensions (unit:mm)



A	B	C	D	E	F	G
24.50	100.0	2.30	330.0	2.30	21.50	13.00
+0.50	+1.00	+0.20	+3.00	+0.30	+0.30	+0.50
-0.50	-1.00	-0.20	-3.00	-0.30	-0.30	-0.20

(3) Tape Dimensions



W	A0	B0	K0	E	F	P	P0	P2	D0/D1	T
24.00	13.80	13.20	7.00	1.75	11.50	20.00	4.00	2.00	1.50	0.40
+0.30	+0.10	+0.10	+0.10	+0.10	+0.10	+0.10	+0.10	+0.10	+0.10	+0.05
-0.30	-0.10	-0.10	-0.10	-0.10	-0.10	-0.10	-0.10	-0.10	-0.00	-0.05

Korea Sales Office (KOREA) +82)31-904-1444
 China Sales Office (CHINA) +86)0758-683-1444
 Hungary Sales office (EUROPE) +36)1-404-5832

H.K Sales Office (HONGKONG) +852)2711-5551
 LA Sales Office (USA) +1)714-616-6989

• You can also contact us by e-mail : coilmaster@coilmaster.com

- All specifications are subject to change without notice.
- Update date : 2025.08.11 (Rev.0.5)

www.coilmaster.com