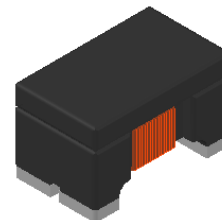




# CME-CSCF2012N-SERIES

## Features

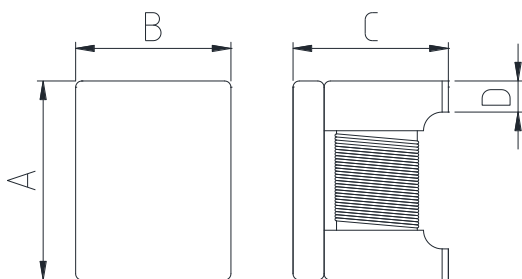
- ▶ High common mode impedance at high frequency effects  
Excellent noise suppression performance.
- ▶ Realizes small size and low profile.
- ▶ RoHS compliant.
- ▶ High reliability test meet AEC-Q200.



## Applications

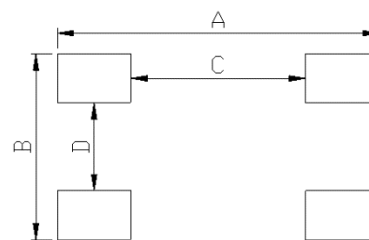
- ▶ Radiated noise suppression for car multimedia interfaces

### Dimension (Unit:mm)



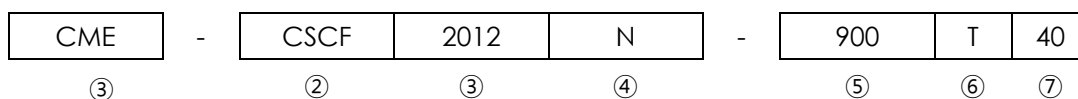
A	B	C	D
2.0±0.2	1.2±0.2	1.2±0.2	0.5±0.1

### Land Pattern (Unit:mm)



A	B	C	D
2.6	1.4	1.25	0.45

## Regulation of part number



- ① CoilMaster's initial
- ② Series Name : Car Signal Line Common mode Filter
- ③ Core Size (unit:mm)
- ④ Type
- ⑤ Common mode impedance value (90 Ω)
- ⑥ Packing type
- ⑦ Rated Current

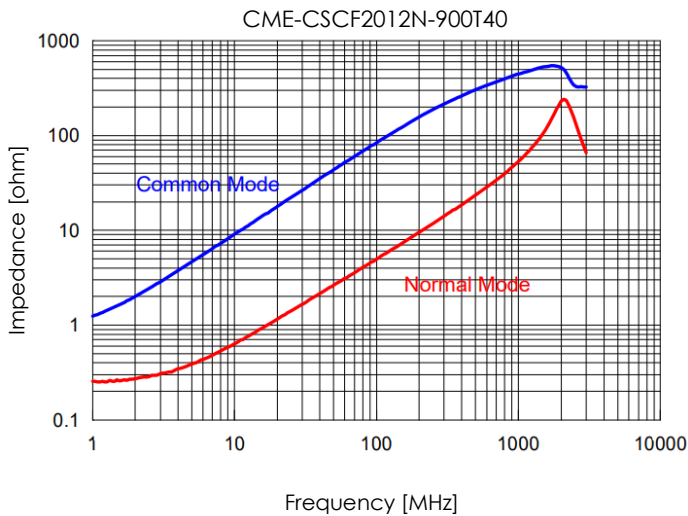
- You can also contact us by e-mail : [coilmaster@coilmaster.com](mailto:coilmaster@coilmaster.com)
- All specifications are subject to change without notice.
- Update date : 2022.10.20

## Specifications

Part Number	Common Mode Impedance ( $\Omega$ )	Common Mode Impedance Tolerance	DCR ( $\Omega$ ) Max.	Rated Current (mA) Max.	Insulation Resistance (M $\Omega$ ) Min.	Rated Voltage (V) Max.
CME-CSCF2012N-900T40	90	25%	0.3	400	10	50

- Impedance test condition : 100 MHz
- Operating Temperature Range : -40 °c ~ +125 °c

## Impedance VS Frequency characteristics



Ilsan Sales Office (KOREA) +82)31-904-1444  
 China Sales Office (CHINA) +86)758-278-7031

H.K Sales Office (HONGKONG) +852)2711-5551  
 LA Sales Office (USA) +1)866-446-3586

• You can also contact us by E-mail: [coilmaster@coilmaster.com](mailto:coilmaster@coilmaster.com)

- All specifications are subject to change without notice.
- Update date : 2022.10.20

[www.coilmaster.com](http://www.coilmaster.com)