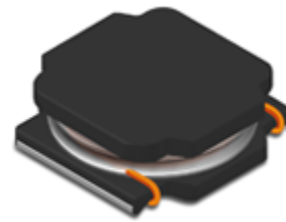


CMI-CDSS4018NH-SERIES

Features

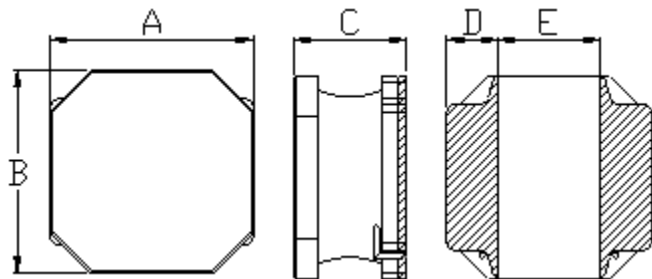
- ▶ High current and low profile.
- ▶ Available tape and reel for auto insertion
- ▶ Simple and Shield structure.
- ▶ RoHS compliant
- ▶ Halogen-Free
- ▶ AEC-Q200 qualified



Applications

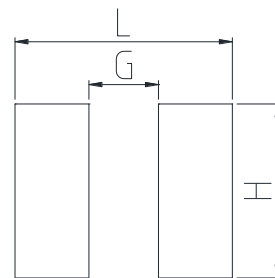
- ▶ Car navigation, car stereo and car accessories only
(Not available for use related to driving, curving, stopping, and the other safety.)

Dimension (Unit:mm)



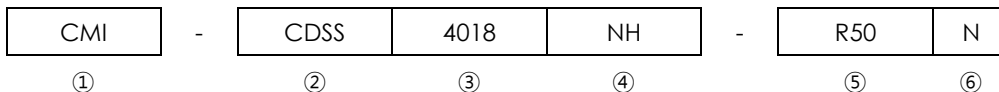
A	B	C	D	E
4.0±0.2	4.0±0.2	1.8 Max.	1.2±0.2	1.6±0.2

Land Pattern (Unit:mm)



L	G	H
4.1	1.5	3.7

Regulation of part number



- ① CoilMaster's initial
- ② Series Name : Car Drum Core Square shape Silver paste type Power inductor
- ③ Core Size (unit:mm)
- ④ Material
- ⑤ Typical inductance value (0.5 uH)
- ⑥ Inductance tolerance (±30%)

• You can also contact us by e-mail : coilmaster@coilmaster.com
 • All specifications are subject to change without notice.
 • Update date : 2022.03.16

