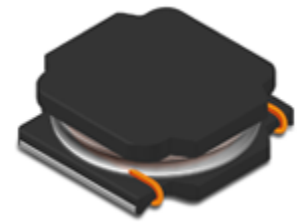


# CMI-CDSS4030NH-SERIES

## Features

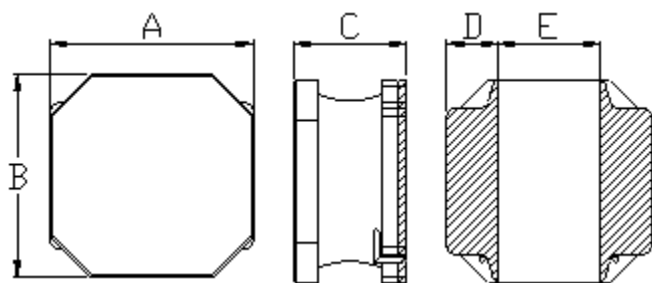
- ▶ High current and low profile.
- ▶ Available tape and reel for auto insertion
- ▶ Simple and Shield structure.
- ▶ RoHS compliant
- ▶ Halogen-Free
- ▶ AEC-Q200 qualified



## Applications

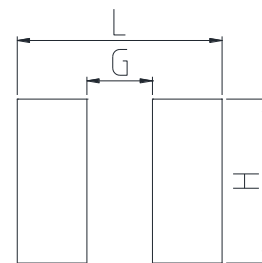
- ▶ Car navigation, car stereo and car accessories only  
(Not available for use related to driving, curving, stopping, and the other safety.)

**Dimension (Unit:mm)**



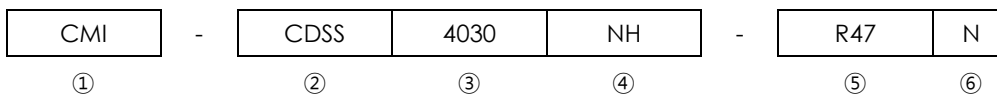
A	B	C	D	E
4.0±0.2	4.0±0.2	3.0 Max.	1.0±0.2	2.0±0.3

**Land Pattern (Unit:mm)**



L	G	H
4.1	1.9	3.7

## Regulation of part number



- ① CoilMaster's initial
- ② Series Name : Car Drum Core Square shape Silver paste type Power inductor
- ③ Core Size (unit:mm)
- ④ Material
- ⑤ Typical inductance value (0.47 uH)
- ⑥ Inductance tolerance (±30%)

• You can also contact us by e-mail : [coilmaster@coilmaster.com](mailto:coilmaster@coilmaster.com)  
 • All specifications are subject to change without notice.  
 • Update date : 2022.03.15

## Specifications

Part Number	Inductance (uH)	Tolerance (±)	DCR(mΩ) ±30%	IDC1(A) Max.	IDC2(A) Max.	Test Frequency (Hz)
CMI-CDSS4030NH-R47N	0.47	30%	11	7.50	4.00	100k
CMI-CDSS4030NH-R56N	0.56	30%	14	6.00	4.00	100k
CMI-CDSS4030NH-1R0N	1.0	30%	15	5.90	3.40	100k
CMI-CDSS4030NH-1R5N	1.5	30%	25	4.85	3.30	100k
CMI-CDSS4030NH-1R8N	1.8	30%	30	4.25	3.20	100k
CMI-CDSS4030NH-2R2M	2.2	20%	35	4.10	2.95	100k
CMI-CDSS4030NH-3R3M	3.3	20%	40	3.30	2.40	100k
CMI-CDSS4030NH-3R6M	3.6	20%	53	3.10	2.30	100k
CMI-CDSS4030NH-3R9M	3.9	20%	57	3.00	2.10	100k
CMI-CDSS4030NH-4R7M	4.7	20%	60	2.90	2.00	100k
CMI-CDSS4030NH-5R6M	5.6	20%	70	2.75	1.95	100k
CMI-CDSS4030NH-6R8M	6.8	20%	75	2.60	1.70	100k
CMI-CDSS4030NH-7R5M	7.5	20%	90	2.20	1.65	100k
CMI-CDSS4030NH-8R2M	8.2	20%	100	2.10	1.60	100k
CMI-CDSS4030NH-100M	10	20%	115	1.95	1.50	100k
CMI-CDSS4030NH-120M	12	20%	140	1.70	1.35	100k
CMI-CDSS4030NH-150M	15	20%	190	1.65	1.15	100k
CMI-CDSS4030NH-180M	18	20%	215	1.40	1.10	100k
CMI-CDSS4030NH-220M	22	20%	225	1.30	1.00	100k
CMI-CDSS4030NH-330M	33	20%	330	1.10	0.84	100k
CMI-CDSS4030NH-470M	47	20%	500	0.90	0.72	100k
CMI-CDSS4030NH-560M	56	20%	560	0.85	0.65	100k
CMI-CDSS4030NH-680M	68	20%	750	0.75	0.55	100k
CMI-CDSS4030NH-820M	82	20%	950	0.68	0.50	100k
CMI-CDSS4030NH-101M	100	20%	1150	0.60	0.45	100k
CMI-CDSS4030NH-151M	150	20%	2350	0.50	0.35	100k
CMI-CDSS4030NH-181M	180	20%	2500	0.40	0.35	100k
CMI-CDSS4030NH-221M	220	20%	3000	0.40	0.30	100k
CMI-CDSS4030NH-331M	330	20%	4400	0.30	0.23	100k
CMI-CDSS4030NH-471M	470	20%	5500	0.30	0.20	100k

- IDC1: When based on the inductance change rate (approximately 30% below in the initial value)
- IDC2: When based on the temperature increase (Temperature increase of approximately 40°C by self heating)
- Operating Temperature Range(including self temperature) : -40°C ~ +125 °C

Ilisan Sales Office (KOREA) +82)31-904-1444  
 China Sales Office (CHINA) +86)758-278-7031  
 Hungary Sales office (EUROPE) +36)1-899-8543

H.K Sales Office (HONGKONG) +852)2711-5551  
 LA Sales Office (USA) +1)866-446-3586

▪ You can also contact us by e-mail : [coilmaster@coilmaster.com](mailto:coilmaster@coilmaster.com)

- All specifications are subject to change without notice.
- Update date : 2022.03.15

[www.coilmaster.com](http://www.coilmaster.com)