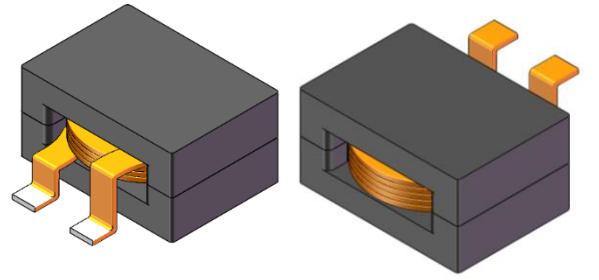


CMI-CEQ2612-101M

Features

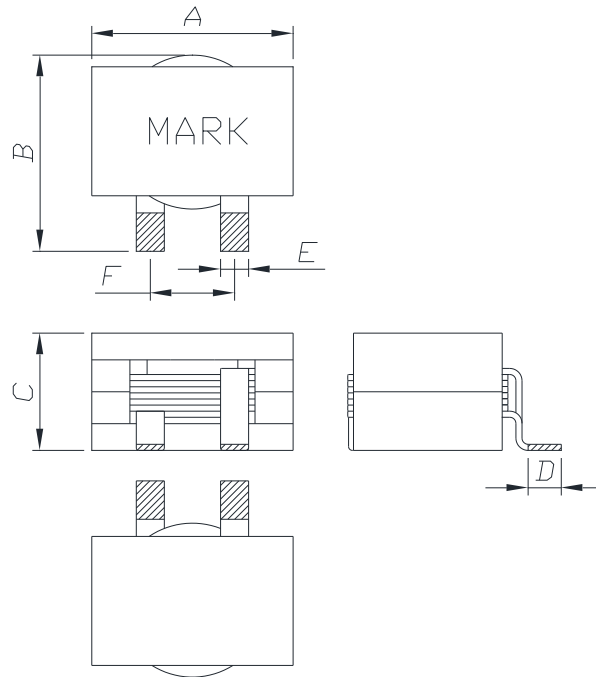
- ▶ Magnetically shielded
- ▶ High current and low profile.
- ▶ Flat wire wound
- ▶ Extra solder pad for increased mechanical stability
- ▶ RoHS compliant.
- ▶ AEC-Q200 qualified.



Applications

- ▶ Communication equipment, server, UPS uninterruptible power supply, new energy vehicles, ESS (Energy Storage System), industrial control system, medical instruments and meters, etc.

Dimension (Unit: mm)



A	B	C	D	E	F
26.0 Max.	28.0 Max.	12.5 Max.	4.0 Min.	4.0 ±0.2	10.0 ±0.5

