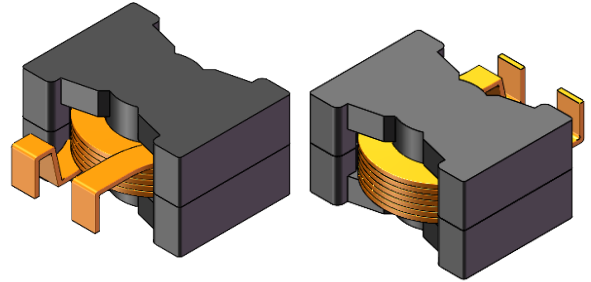


CMI-CPQ2115HC-7R5K

Features

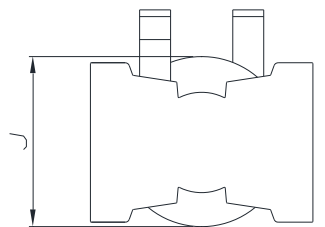
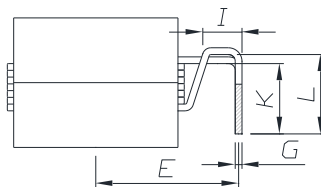
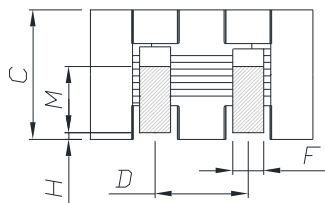
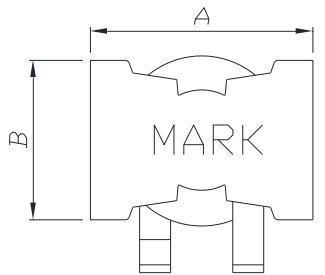
- ▶ Magnetically shielded
- ▶ High current and low profile.
- ▶ Flat wire wound
- ▶ Extra solder pad for increased mechanical stability
- ▶ RoHS compliant.
- ▶ AEC-Q200 qualified.



Applications

- ▶ Equipment using for automobiles (ECM, Airbags, Headlights, Electronic Power Steering, Motors, ABS, other) ESS (Energy Storage System)

Dimension (Unit: mm)



A	B	C	D	E
21.6 Max.	15.3 Max.	15.0 Max.	7.4 ±0.4	15.0 ±0.5
F	G	H	I	J
3.5+0.1/-0.3	0.8 ±0.15	1.5 ±0.8	5.1 Min.	18.5 Max.
K	L	M		
5.0~12.5	5.0~12.5	4.5 Min.		

- You can also contact us by e-mail : coilmaster@coilmaster.com
- All specifications are subject to change without notice.
- Update date : 2024.10.23

