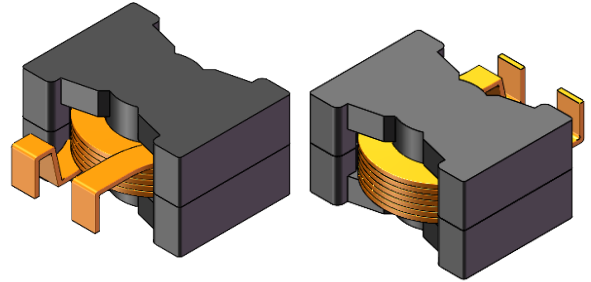


# CMI-CPQ2714HC-7R2K

## Features

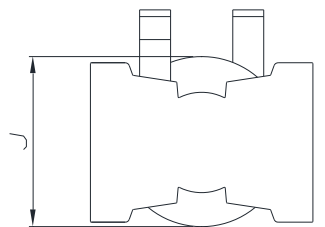
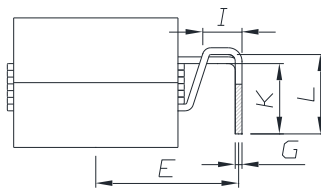
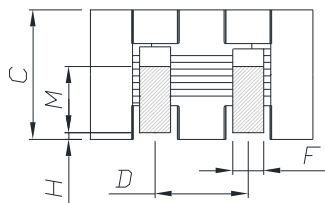
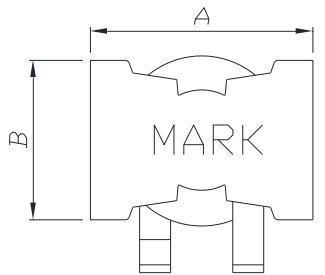
- ▶ Magnetically shielded
- ▶ High current and low profile.
- ▶ Flat wire wound
- ▶ Extra solder pad for increased mechanical stability
- ▶ RoHS compliant.
- ▶ AEC-Q200 qualified.



## Applications

- ▶ Equipment using for automobiles (ECM, Airbags, Headlights, Electronic Power Steering, Motors, ABS, other) ESS (Energy Storage System)

## Dimension (Unit: mm)



A	B	C	D	E
27.2 Max.	19.8 Max.	14.2 Max.	10.4 ±0.4	17.4 ±0.5
F	G	H	I	J
3.5+0.1/-0.3	0.6 ±0.15	1.5 ±0.8	5.6 Min.	20.9 Max.
K	L	M		
4.0~12.5	4.0~12.5	6.5 ±1.0		

• You can also contact us by e-mail : [coilmaster@coilmaster.com](mailto:coilmaster@coilmaster.com)  
 • All specifications are subject to change without notice.  
 • Update date : 2024.10.23

