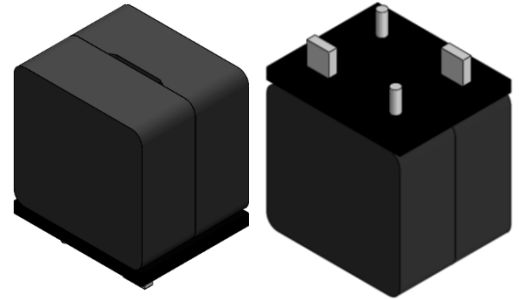


CMI-CSBL1719B4-220M

Features

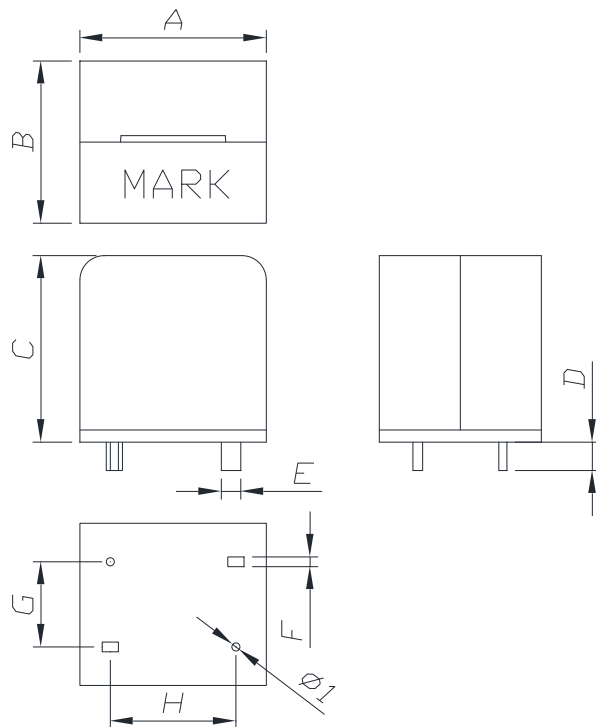
- ▶ Magnetically shielded
- ▶ High current and low profile.
- ▶ Flat wire wound
- ▶ Extra solder pad for increased mechanical stability
- ▶ RoHS compliant.
- ▶ AEC-Q200 qualified.



Applications

- ▶ Equipment using for automobiles (ECM, Airbags, Headlights, Electronic Power Steering, Motors, ABS, other) ESS (Energy Storage System)

Dimension (Unit: mm)



A	B	C	D	E	F	G	H
17.5 ±0.5	15.0 ±0.5	19.3 Max.	5.0 ±1.0	1.25 ±0.1	0.75 ±0.1	8.5 ±0.2	12.5 ±0.2

- You can also contact us by e-mail : coilmaster@coilmaster.com
- All specifications are subject to change without notice.
- Update date : 2024.10.23

