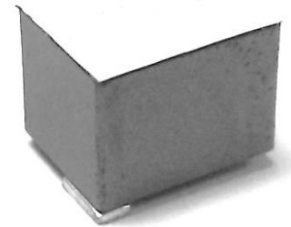


CMI-MPLD8072EHS-SERIES

a new design for highest saturation in equivalent size.

Features

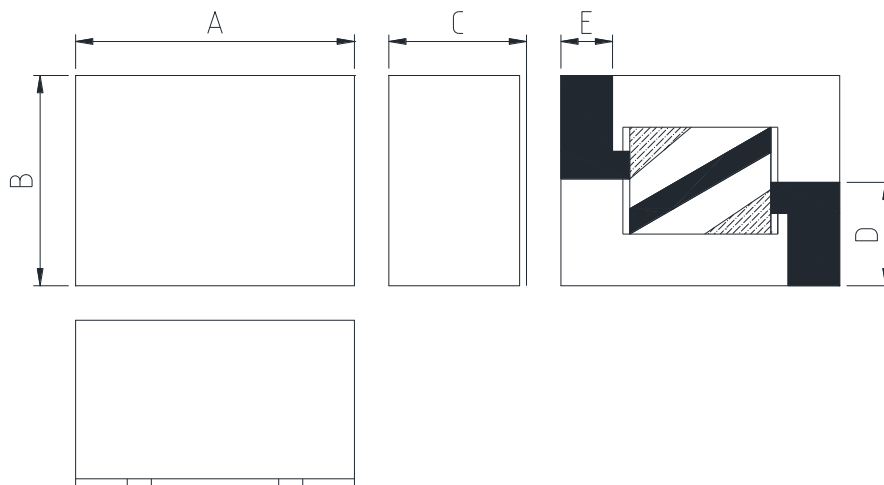
- ▶ High current and precision DCR.
- ▶ Higher saturation
- ▶ Ferrite core type for EMC protection.
- ▶ RoHS compliant / Halogen-Free.



Applications

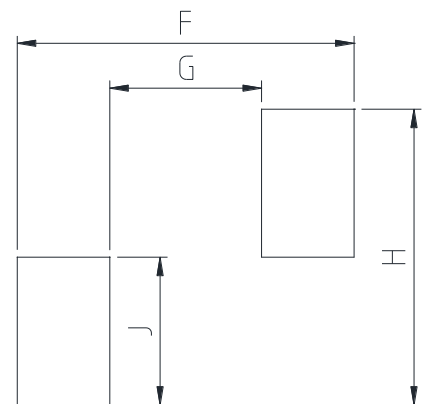
- ▶ Server, workstation and storage systems.
- ▶ Desktop and Notebook.
- ▶ Graphics cards and battery power systems.
- ▶ Multi-phase and VCORE regulators.
- ▶ Voltage Regulator Modules (VRMs)
- ▶ Point-of-Load modules.
- ▶ DCR Sensing circuits.

Dimension (Unit:mm)



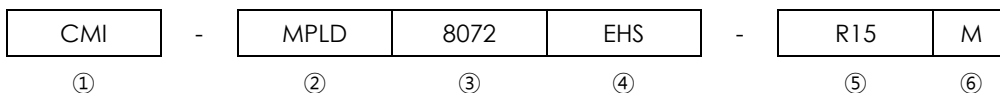
| A | B | C | D | E |
|---------|---------|---------|---------|---------|
| 8.1±0.4 | 6.5±0.4 | 7.2 Max | 3.0±0.4 | 1.5±0.4 |

Land Pattern (Unit:mm)



| F | G | H | J |
|-----|-----|-----|-----|
| 9.1 | 4.1 | 7.5 | 4.0 |

Regulation of part number



- ① CoilMaster's initial
- ② Series Name : Magnetic Pin Low Dcr Power inductor
- ③ Core Size (unit:mm)
- ④ Type
- ⑤ Typical inductance value (0.15uH)
- ⑥ Inductance tolerance ($\pm 20\%$)

Specifications

| Part Number | Inductance (uH) $\pm 20\%$ | DCR(mohm) $\pm 10\%$ | Isat(A) typ. | | Irms(A) Typ. |
|----------------------|-------------------------------|-------------------------|-------------------------|--------------------------|-----------------|
| | | | T _{amb} =25 °C | T _{amb} =125 °C | |
| CMI-MPLD8072EHS-R15M | 0.15 | 1.0 | 80 | 60 | 35 |
| CMI-MPLD8072EHS-R22M | 0.22 | 1.0 | 55 | 40 | 35 |
| CMI-MPLD8072EHS-R30M | 0.30 | 1.0 | 45 | 34 | 35 |
| CMI-MPLD8072EHS-R47M | 0.47 | 1.0 | 28 | 21 | 35 |
| CMI-MPLD8072EHS-R68M | 0.68 | 1.0 | 20 | 15 | 35 |
| CMI-MPLD8072EHS-1R0M | 1.0 | 1.0 | 10 | 7.5 | 35 |
| | | | | | |
| | | | | | |
| | | | | | |
| | | | | | |

- Test Frequency: 100kHz, 25 °c
- Isat: When based on the inductance change rate (approximately 30% below in the initial value)
- Irms: When based on the temperature increase (Temperature increase of approximately 40°C by self heating)
- Operating Temperature Range(including self temperature) : -40°C ~ +125 °c

Note 1 : Circuit design, component placement, PCB trace size and thickness, airflow and other cooling. Provision all affect the part Temperature. Part temperature should be verified in the end application.

| | | | |
|-------------------------------|-------------------|-----------------------------|-----------------|
| Ilsan Sales Office (KOREA) | +82)31-904-1444 | H.K Sales Office (HONGKONG) | +852)2711-5551 |
| Shenzhen Sales Office (CHINA) | +86)755-8663-6929 | LA Sales Office (USA) | +1)866-446-3586 |
| Hungary Sales office (EUROPE) | +36)30-913-7706 | | |

▪ You can also contact us by e-mail : coilmaster@coilmaster.com

- All specifications are subject to change without notice.
- Update date : 2022.01.11

www.coilmaster.com