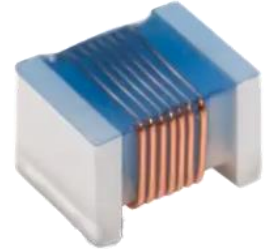


CMI-RWCI1005-SERIES

Features

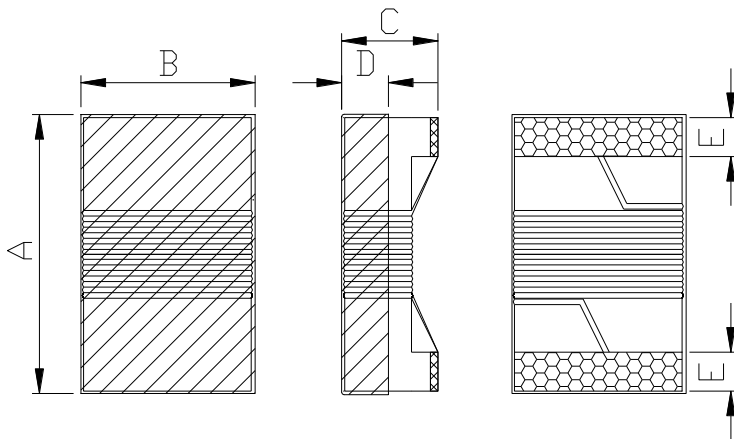
- ▶ Halogen-Free / RoHS compliant.
- ▶ Support operating frequency up to 10GHz.
- ▶ Provide high quality factor.
- ▶ Monolithic structure for high reliability.
- ▶ Excellent solderability and high heat resistance for either flow or reflow soldering.



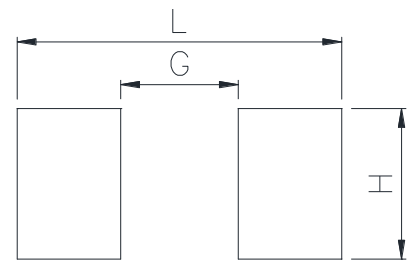
Applications

- ▶ RF circuit and module.
- ▶ Tablet, Notebook, Desktop computers and peripheral equipment
- ▶ DSC, DVC, LCD Television, Set Top Box.
- ▶ Mobile phone, Smart phone, PND
- ▶ Digital communication equipment
- ▶ Various electronic equipment.

Dimension (Unit:mm)



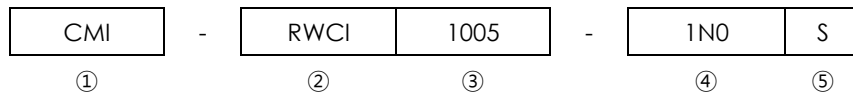
Land Pattern (Unit:mm)



A	B	C	D	E	L	G	H
1.0±0.1	0.55±0.1	0.5±0.1	0.5	0.2±0.1	2.1	0.5	0.55

- You can also contact us by e-mail : coilmaster@coilmaster.com
- All specifications are subject to change without notice.
- Update date : 2023.05.10

Regulation of part number



- ① CoilMaster's initial
- ② Product Series Name
- ③ Core Size (unit:mm)
- ④ Inductance Value (1N0 : 1.0 nH)
- ⑤ Inductance Tolerance (S : ±0.3nH, G : ±2%, J : ±5%, K : ±10%, M : ±20%)

Specifications

Part Number	Inductance (nH)	Q Min.	Test Frequency (MHz)	SRF (MHz) Min.	DC Resistance (ohm) Max.	Rated Current (mA) Max.
CMI-RWCI1005-1N0B,S	1.0	13	250	6000	0.045	1360
CMI-RWCI1005-2N0B,S	2.0	16	250	6000	0.070	1040
CMI-RWCI1005-2N2B,S	2.2	18	250	6000	0.070	960
CMI-RWCI1005-3N3B,S	3.3	20	250	6000	0.066	840
CMI-RWCI1005-3N6J,K	3.6	20	250	6000	0.066	840
CMI-RWCI1005-3N9J,K	3.9	20	250	5800	0.066	840
CMI-RWCI1005-5N1B,J,K	5.1	23	250	5800	0.083	800
CMI-RWCI1005-5N6B,J,K	5.6	23	250	5800	0.083	760
CMI-RWCI1005-6N2B,J,K	6.2	23	250	5800	0.083	760
CMI-RWCI1005-7N5B,J,K	7.5	25	250	5800	0.104	680
CMI-RWCI1005-8N2B,J,K	8.2	25	250	4400	0.104	680
CMI-RWCI1005-9N0B,J,K	9.0	25	250	4160	0.104	680
CMI-RWCI1005-10NG,K	10	23	250	3900	0.195	480
CMI-RWCI1005-11NG,K	11	26	250	3680	0.120	640
CMI-RWCI1005-12NG,K	12	26	250	3600	0.120	640
CMI-RWCI1005-15NG,K	15	26	250	3280	0.172	560
CMI-RWCI1005-19NG,K	19	26	250	3040	0.202	480
CMI-RWCI1005-23NG,K	23	26	250	2720	0.214	400
CMI-RWCI1005-27NG,K	27	26	250	2480	0.28	400
CMI-RWCI1005-36NG,K	36	26	250	2320	0.403	320

- You can also contact us by e-mail : coilmaster@coilmaster.com
- All specifications are subject to change without notice.
- Update date : 2023.05.10

Part Number	Inductance (nH)	Q Min.	Test Frequency (MHz)	SRF (MHz) Min.	DC Resistance (ohm) Max.	Rated Current (mA) Max.
CMI-RWC11005-40NG,K	40	26	250	2240	0.438	320
CMI-RWC11005-47NG,K	47	26	200	2100	0.830	150

- Rated Current : the DC current value having temperature increased 40 °c after thru DC current 2 hours at ambient temperature.
- Storage Temperature Range : -40°c ~ +85 °c
- Operating Temperature Range : -40°c ~ +85 °c

Note 1 : Circuit design, component placement, PCB trace size and thickness, airflow and other cooling. Provision all affect the part Temperature. Part temperature should be verified in the end application.

Korea Sales Office (KOREA)	+82)31-904-1444	H.K Sales Office (HONGKONG)	+852)2711-5551
China Sales Office (CHINA)	+86)0758-683-1444	LA Sales Office (USA)	+1)714-616-6989
Hungary Sales office (EUROPE)	+36)1-404-5832		

- **You can also contact us by e-mail : coilmaster@coilmaster.com**
- All specifications are subject to change without notice.
- Update date : 2023.05.10

www.coilmaster.com