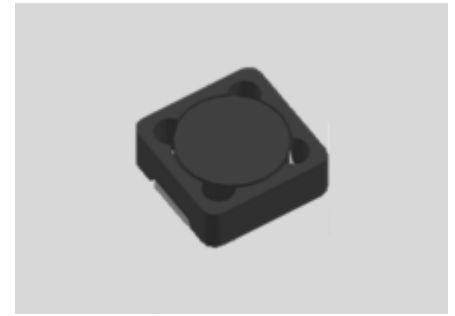


CMI-CSSB12045NH-SERIES



Features

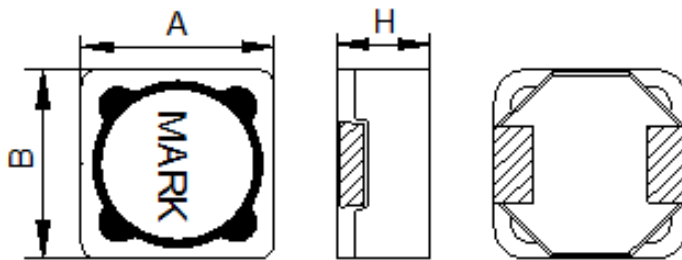
- ▶ SMD inductor.
- ▶ It corresponds to high current.
- ▶ Available tape and reel for auto insertion
- ▶ Simple and Shield structure.
- ▶ RoHS compliant.
- ▶ Halogen-Free
- ▶ AEC-Q200 qualified



Applications

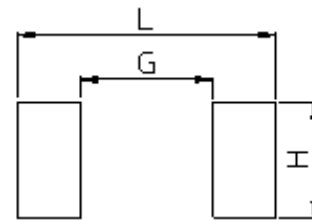
- ▶ Equipment using for automobiles
(ECM, airbags, headlights, electronic powder steering, motors, ABS, other)

Dimension (Unit:mm)



| A | B | H |
|----------|----------|--------|
| 12.3±0.2 | 12.3±0.2 | 4.5Max |

Land Pattern (Unit:mm)



| L | G | H |
|------|-----|-----|
| 13.8 | 6.1 | 5.5 |

Specifications

| Part Number | Inductance (uH) ±20% | DCR(mohm) ±20% | IDC1(A) Max. | IDC2(A) Max. | Test Frequency (Hz) |
|----------------------|----------------------|----------------|--------------|--------------|---------------------|
| CMI-CSSB12045NH-150M | 15 | 48 | 5.20 | 4.30 | 100k |
| CMI-CSSB12045NH-220M | 22 | 70 | 3.60 | 3.10 | 100k |
| CMI-CSSB12045NH-101M | 100 | 295 | 1.70 | 1.60 | 100k |
| | | | | | |
| | | | | | |
| | | | | | |

- IDC1: When based on the inductance change rate (approximately 30% below in the initial value)
- IDC2: When based on the temperature increase (Temperature increase of approximately 40°C by self heating)
- Operating Temperature Range(including self temperature) : -40°C ~ +165 °C

Ilisan Sales Office (KOREA) +82)31-904-1444
 Shenzhen Sales Office (CHINA) +86)755-8663-6929
 Hungary Sales office (EUROPE) +36)30-913-7706

H.K Sales Office (HONGKONG) +852)2711-5551
 LA Sales Office (USA) +1)866-446-3586

• You can also contact us by e-mail : coilmaster@coilmaster.com

- All specifications are subject to change without notice.
- Update date : 2018.10.25

www.coilmaster.com