

CMI-DP4020NH-SERIES



Features

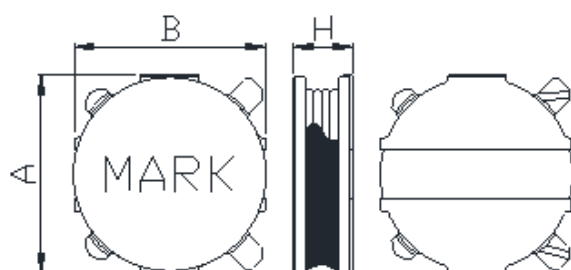
- ▶ SMD inductor.
- ▶ Resin shielded construction.
- ▶ Available tape and reel for auto insertion.
- ▶ RoHS compliant
- ▶ Halogen-Free

Applications

- ▶ For small DC/DC converter (LCD/LED/OLED display, HDD, DSC etc).
- ▶ For Power supply circuits.

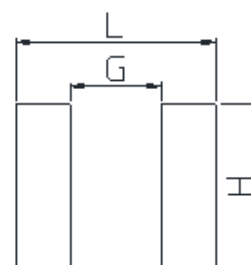


Dimension (Unit:mm)



A	B	H
4.0±0.2	4.0±0.2	2.0Max

Land Pattern (Unit:mm)



L	G	H
4.10	1.90	3.70

Specifications

Part Number	Inductance (uH)	Tolerance (±)	DCR (mohm) ±20%	Isat(A) Max	Itemp(A) Max	Test Frequency (Hz)
CMI-DP4020NH-1R0M	1.0	20	25	4.80	3.60	100k
CMI-DP4020NH-2R2M	2.2	20	40	3.40	2.40	100k
CMI-DP4020NH-4R7M	4.7	20	70	2.50	1.80	100k
CMI-DP4020NH-6R8M	6.8	20	100	2.20	1.50	100k
CMI-DP4020NH-100M	10	20	160	1.60	1.20	100k
CMI-DP4020NH-220M	22	20	290	1.10	0.75	100k
CMI-DP4020NH-330M	33	20	460	0.90	0.60	100k
CMI-DP4020NH-470M	47	20	650	0.75	0.45	100k
CMI-DP4020NH-680M	68	20	1000	0.63	0.36	100k
CMI-DP4020NH-101M	100	20	1450	0.50	0.31	100k

- Isat: When based on the inductance change rate (approximately 20% below in the initial value)
- Itemp: When based on the temperature increase (Temperature increase of approximately 40°C by self heating)
- Operating temperature range : -40°C ~ +125°C (Including self-heating)

Ilson Sales Office (KOREA) +82)31-904-1444
 Shenzhen Sales Office (CHINA) +86)755-8663-6929
 Hungary Sales office (EUROPE) +36)30-913-7706

H.K Sales Office (HONGKONG) +852)2711-5551
 LA Sales Office (USA) +1)866-446-3586

▪ You can also contact us by e-mail : coilmaster@coilmaster.com

- All specifications are subject to change without notice.
- Update date : 2015.11.19

www.coilmaster.com