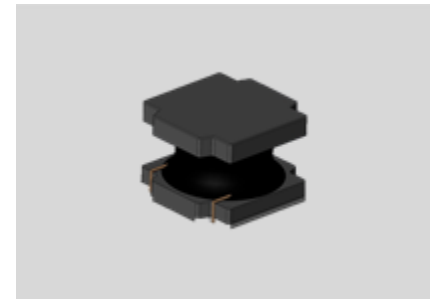


# CMI-DSS6045NH-SERIES



## Features

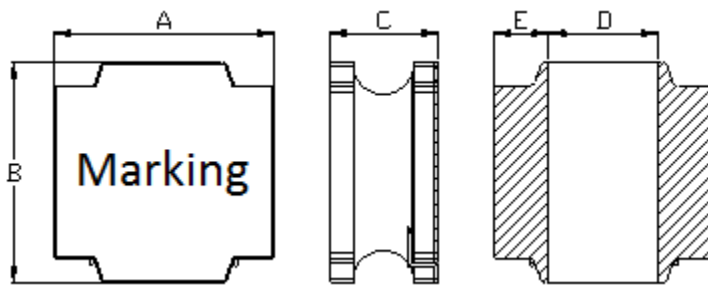
- ▶ Small and Low profile inductor
- ▶ It corresponds to High current.
- ▶ Simple and Shield structure.
- ▶ Takes up less PCB real estate and save more power
- ▶ Available tape and reel for auto insertion.
- ▶ RoHs compliant
- ▶ Halogen-Free



## Applications

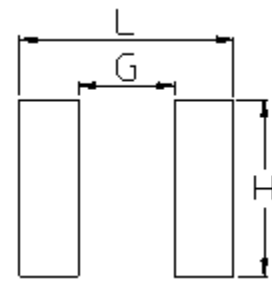
- ▶ For small DC/DC converter (cellular Phone, LCD/LED/OLED display etc).

Dimension (Unit:mm)



A	B	C	D	E
6.0±0.3	6.0±0.3	4.7 Max.	1.7±0.3	2.6±0.3

Land Pattern (Unit:mm)



L	G	H
6.0	2.4	5.7

## Specifications

Part Number	Inductance (μH)	Tolerance (±)	DCR (mΩ) ±30%	I <sub>sat</sub> (A) Max.	I <sub>temp</sub> (A) Max.	SRF (Min) (MHz)
CMI-DSS6045NH-1R0N	1.0	30%	11	9.85	5.14	100
CMI-DSS6045NH-1R2N	1.2	30%	12	9.40	5.05	90
CMI-DSS6045NH-1R5N	1.5	30%	12	8.80	4.95	65
CMI-DSS6045NH-1R8N	1.8	30%	13	8.00	4.80	60
CMI-DSS6045NH-2R2N	2.2	30%	14	6.75	4.60	52
CMI-DSS6045NH-3R3N	3.3	30%	21	5.90	3.70	32
CMI-DSS6045NH-4R7M	4.7	20%	26	4.97	3.30	24
CMI-DSS6045NH-5R6M	5.6	20%	29	4.15	3.15	23
CMI-DSS6045NH-6R8M	6.8	20%	31	3.90	3.00	20
CMI-DSS6045NH-8R2M	8.2	20%	43	3.90	2.60	21
CMI-DSS6045NH-100M	10	20%	48	3.20	2.45	15
CMI-DSS6045NH-150M	15	20%	68	2.50	2.05	12

• You can also contact us by e-mail : [coilmaster@coilmaster.com](mailto:coilmaster@coilmaster.com)

- All specifications are subject to change without notice
- Update date : 2017.07.04

Part Number	Inductance (μH)	Tolerance (±)	DCR (mΩ) ±30%	Isat (A) Max.	Itemp (A) Max.	SRF (Min) (MHz)
CMI-DSS6045NH-220M	22	20%	89	2.05	1.80	10
CMI-DSS6045NH-330M	33	20%	137	1.65	1.45	7.8
CMI-DSS6045NH-470M	47	20%	200	1.40	1.20	6.4
CMI-DSS6045NH-560M	56	20%	221	1.30	1.10	6.4
CMI-DSS6045NH-680M	68	20%	289	1.20	1.00	6.4
CMI-DSS6045NH-101M	100	20%	433	0.95	0.80	4.2
CMI-DSS6045NH-121M	120	20%	484	0.85	0.77	4.2
CMI-DSS6045NH-151M	150	20%	580	0.80	0.70	4.2
CMI-DSS6045NH-221M	220	20%	834	0.70	0.59	.5
CMI-DSS6045NH-331M	330	20%	1270	0.57	0.57	2.8
CMI-DSS6045NH-471M	470	20%	1800	0.50	0.42	2.0
CMI-DSS6045NH-681M	680	20%	2500	0.42	0.33	1.7
CMI-DSS6045NH-102M	1000	20%	4500	0.30	0.30	1.4
CMI-DSS6045NH-152M	1500	20%	6500	0.24	0.21	0.8

- Inductance Tested at 100kHz, 1Vrms (20°C)
- Isat: When based on the inductance change rate (approximately 30% below in the initial value)
- Itemp: When based on the temperature increase (Temperature increase of approximately 40°C by self heating)
- Operating Temperature Range (including self temperature) : -25°C ~ +125°C

Note 1 : Circuit design, component placement, PCB trace size and thickness, airflow and other cooling. Provision all affect the part Temperature. Part temperature should be verified in the end application

Ilisan Sales Office (KOREA) +82)31-904-1444  
Shenzhen Sales Office (CHINA) +86)755-8663-6929  
Hungary Sales office (EUROPE) +36)30-913-7706

H.K Sales Office (HONGKONG) +852)2711-5551  
LA Sales Office (USA) +1)866-446-3586

▪ **You can also contact us by e-mail : [coilmaster@coilmaster.com](mailto:coilmaster@coilmaster.com)**

- All specifications are subject to change without notice
- Update date : 2017.07.04

[www.coilmaster.com](http://www.coilmaster.com)