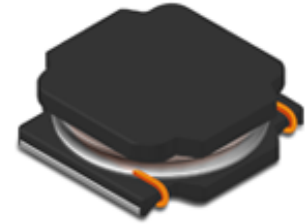


CMI-DSS8040NH-SERIES



Features

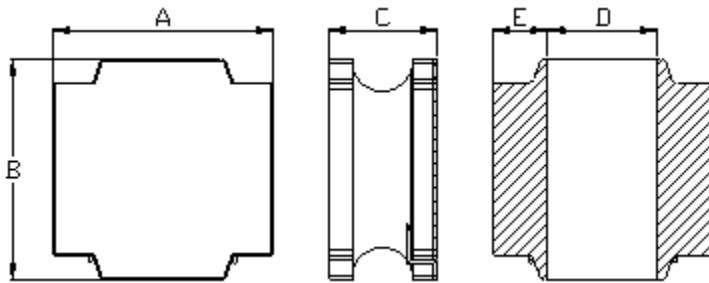
- ▶ Small and Low profile inductor
- ▶ It corresponds to High current.
- ▶ Simple and Shield structure.
- ▶ Takes up less PCB real estate and save more power
- ▶ Available tape and reel for auto insertion.
- ▶ RoHs compliant
- ▶ Halogen-Free



Applications

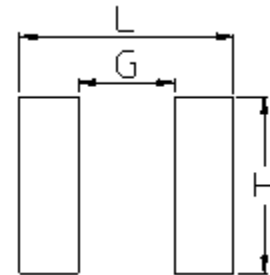
- ▶ For small DC/DC converter (cellular Phone, LCD/LED/OLED display etc).

Dimension (Unit:mm)



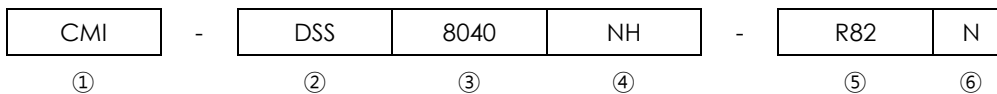
| A | B | C | D | E |
|---------|---------|----------|---------|---------|
| 8.0±0.3 | 8.0±0.3 | 4.2 Max. | 2.1±0.3 | 3.8±0.3 |

Land Pattern (Unit:mm)



| L | G | H |
|-----|-----|-----|
| 8.2 | 3.8 | 7.5 |

Regulation of part number



- ① CoilMaster's initial
- ② Series Name : Drum core Square shape Silver paste type Power Inductor
- ③ Core Size (unit:mm)
- ④ Type
- ⑤ Typical inductance value (0.82 uH)
- ⑥ Inductance tolerance (±30%)

• You can also contact us by e-mail : coilmaster@coilmaster.com

- All specifications are subject to change without notice
- Update date : 2021.10.29

Specifications

| Part Number | Inductance (μH) | Tolerance (±) | DCR (mΩ) ±30% | Isat (A) Max. | Itemp (A) Max. | SRF (Min) (MHz) |
|--------------------|-----------------|---------------|---------------|---------------|----------------|-----------------|
| CMI-DSS8040NH-R82N | 0.82 | 30% | 8 | 13.80 | 6.30 | 94 |
| CMI-DSS8040NH-1R0N | 1.0 | 30% | 8 | 9.85 | 6.30 | 89 |
| CMI-DSS8040NH-1R5N | 1.5 | 30% | 10 | 8.15 | 5.65 | 67 |
| CMI-DSS8040NH-2R2N | 2.2 | 30% | 12 | 7.10 | 5.15 | 41 |
| CMI-DSS8040NH-3R3N | 3.3 | 30% | 17 | 6.50 | 4.40 | 27 |
| CMI-DSS8040NH-3R6N | 3.6 | 30% | 17 | 6.50 | 4.20 | 26 |
| CMI-DSS8040NH-4R7N | 4.7 | 30% | 19 | 5.90 | 4.10 | 24 |
| CMI-DSS8040NH-6R8M | 6.8 | 20% | 24 | 4.55 | 3.60 | 20 |
| CMI-DSS8040NH-8R2M | 8.2 | 20% | 26 | 4.20 | 3.45 | 17 |
| CMI-DSS8040NH-100M | 10 | 20% | 42 | 3.60 | 3.30 | 15 |
| CMI-DSS8040NH-150M | 15 | 20% | 47 | 2.95 | 2.60 | 12 |
| CMI-DSS8040NH-180M | 18 | 20% | 53 | 2.70 | 2.40 | 11 |
| CMI-DSS8040NH-180M | 18 | 20% | 53 | 2.70 | 2.40 | 11 |
| CMI-DSS8040NH-220M | 22 | 20% | 69 | 2.40 | 2.10 | 9.5 |
| CMI-DSS8040NH-470M | 47 | 20% | 136 | 1.75 | 1.55 | 6.4 |
| CMI-DSS8040NH-680M | 68 | 20% | 196 | 1.45 | 1.25 | 4.9 |
| CMI-DSS8040NH-820M | 82 | 20% | 225 | 1.30 | 1.15 | 4.9 |
| CMI-DSS8040NH-101M | 100 | 20% | 290 | 1.15 | 1.00 | 4.2 |
| CMI-DSS8040NH-121M | 120 | 20% | 334 | 1.05 | 0.95 | 3.5 |
| CMI-DSS8040NH-151M | 150 | 20% | 410 | 1.10 | 0.85 | 3.5 |
| CMI-DSS8040NH-221M | 220 | 20% | 599 | 0.85 | 0.80 | 3.5 |
| CMI-DSS8040NH-331M | 330 | 20% | 889 | 0.68 | 0.64 | 2.8 |
| CMI-DSS8040NH-471M | 470 | 20% | 1260 | 0.60 | 0.54 | 2.1 |
| CMI-DSS8040NH-681M | 680 | 20% | 2040 | 0.50 | 0.45 | 1.7 |
| CMI-DSS8040NH-102M | 1000 | 20% | 2800 | 0.40 | 0.35 | 1.4 |
| | | | | | | |
| | | | | | | |
| | | | | | | |
| | | | | | | |

- Inductance Tested at 100kHz, 1Vrms (20°C)
- Isat: When based on the inductance change rate (approximately 30% below in the initial value)
- Itemp: When based on the temperature increase (Temperature increase of approximately 40°C by self heating)
- Operating Temperature Range(including self temperature) : -25°C ~ +125°C

Note 1 : Circuit design, component placement, PCB trace size and thickness, airflow and other cooling. Provision all affect the part Temperature. Part temperature should be verified in the end application

• You can also contact us by e-mail : coilmaster@coilmaster.com

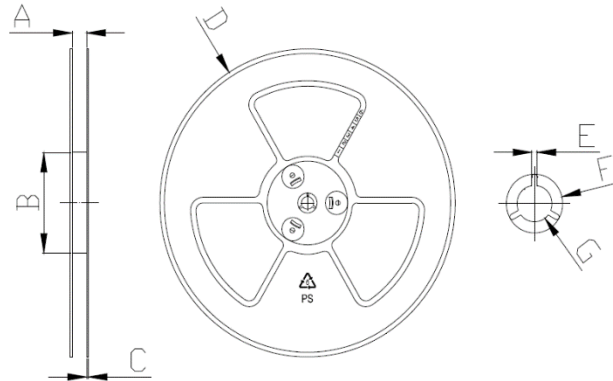
- All specifications are subject to change without notice
- Update date : 2021.10.29

www.coilmaster.com

Packaging

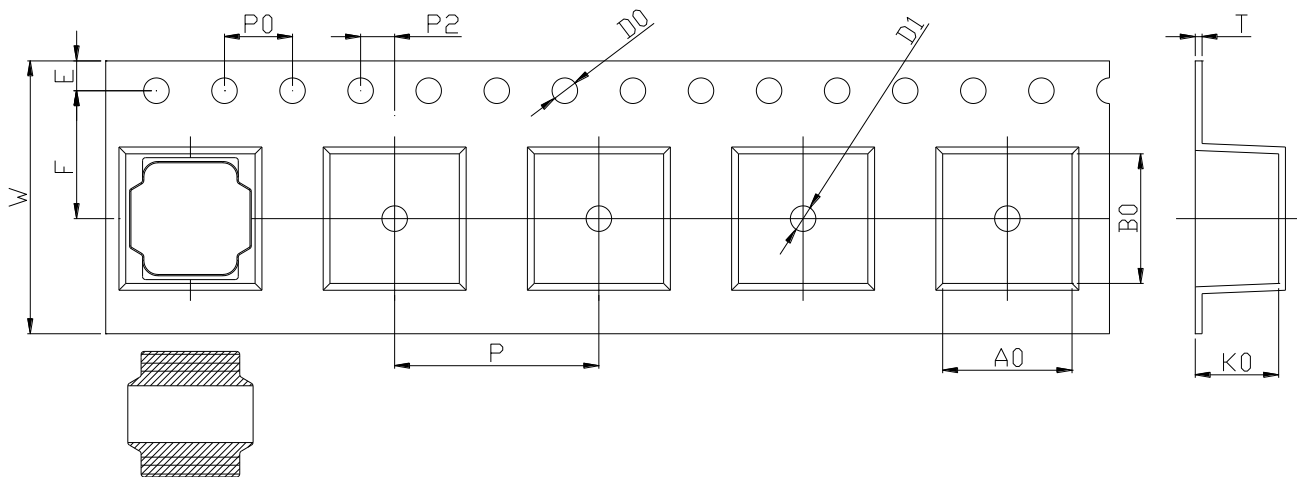
(1) Package quantity : 1,000 (pcs/reel)

(2) Reel Dimensions (unit:mm)



| A | B | C | D | E | F | G |
|-------|-------|-------|-------|-------|-------|-------|
| 16.50 | 100.0 | 2.00 | 330.0 | 2.30 | 21.50 | 13.00 |
| +0.50 | +1.00 | +0.10 | +1.00 | +0.30 | +0.30 | +0.50 |
| -0.50 | -1.00 | -0.10 | -1.00 | -0.30 | -0.30 | -0.50 |

(3) Tape Dimensions



| W | A0 | B0 | K0 | E | F | P | P0 | P2 | D0/D1 | T |
|-------|-------|-------|-------|-------|-------|-------|-------|-------|-------|-------|
| 16.00 | 8.40 | 8.40 | 4.40 | 1.75 | 7.50 | 12.00 | 4.00 | 2.00 | 1.50 | 0.35 |
| +0.30 | +0.10 | +0.10 | +0.10 | +0.10 | +0.10 | +0.15 | +0.10 | +0.10 | +0.10 | +0.05 |
| -0.30 | -0.10 | -0.10 | -0.10 | -0.10 | -0.10 | -0.15 | -0.10 | -0.10 | -0.10 | -0.05 |

Ilisan Sales Office (KOREA) +82)31-904-1444
 Shenzhen Sales Office (CHINA) +86)755-8663-6929
 Hungary Sales office (EUROPE) +36)30-913-7706

H.K Sales Office (HONGKONG) +852)2711-5551
 LA Sales Office (USA) +1)866-446-3586

• You can also contact us by e-mail : coilmaster@coilmaster.com

- All specifications are subject to change without notice
- Update date : 2021.10.29

www.coilmaster.com