



# CMI-MPLD11088HS-SERIES

Higher saturation series

## Features

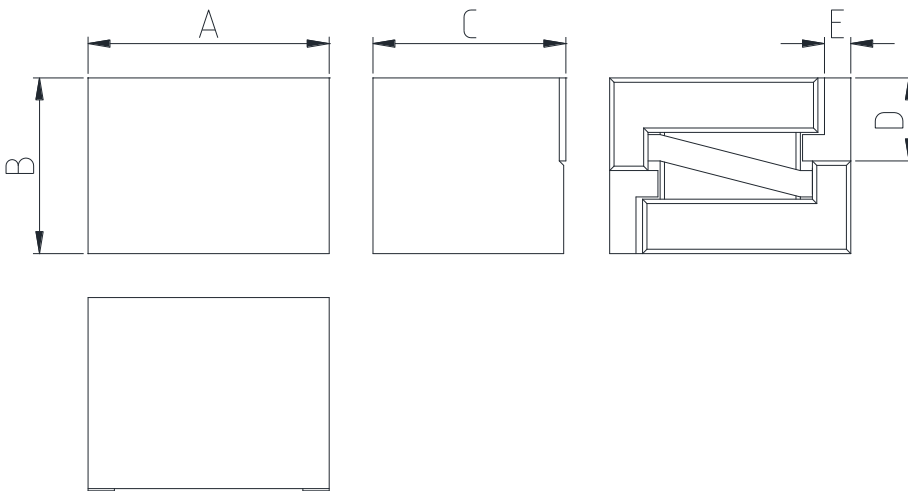
- ▶ High current and precision DCR.
- ▶ Ferrite core type for EMC protection.
- ▶ RoHS compliant / Halogen-Free.



## Applications

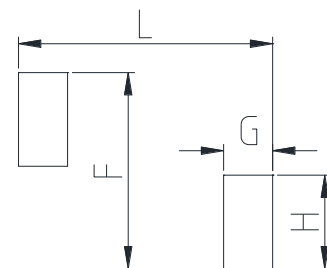
- ▶ Server, workstation and storage systems.
- ▶ Desktop and Notebook.
- ▶ Graphics cards and battery power systems.
- ▶ Multi-phase and VCORE regulators.
- ▶ Voltage Regulator Modules (VRMs)
- ▶ Point-of-Load modules.
- ▶ DCR Sensing circuits.

### Dimension (Unit:mm)



| A        | B       | C       | D       | E       |
|----------|---------|---------|---------|---------|
| 11.0±0.3 | 8.0±0.3 | 8.8 Max | 4.8±0.3 | 1.2±0.3 |

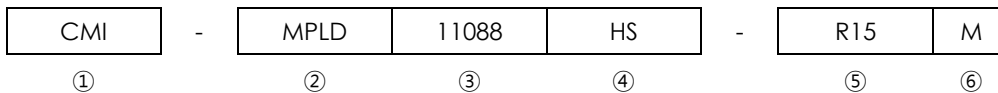
### Land Pattern (Unit:mm)



| L    | G   | H   | F   |
|------|-----|-----|-----|
| 11.4 | 2.2 | 4.2 | 8.8 |

- You can also contact us by e-mail : [coilmaster@coilmaster.com](mailto:coilmaster@coilmaster.com)
- All specifications are subject to change without notice.
- Update date : 2022.01.11

## Regulation of part number



- ① CoilMaster's initial
- ② Series Name : Magnetic Pin Low Dcr Power inductor
- ③ Core Size (unit:mm)
- ④ Type
- ⑤ Typical inductance value (0.15uH)
- ⑥ Inductance tolerance ( $\pm 20\%$ )

## Specifications

| Part Number          | Inductance<br>(uH) $\pm 20\%$ | DCR(mohm)<br>$\pm 10\%$ | Isat(A) typ.            |                          | Irms(A)<br>Typ. |
|----------------------|-------------------------------|-------------------------|-------------------------|--------------------------|-----------------|
|                      |                               |                         | T <sub>amb</sub> =25 °C | T <sub>amb</sub> =125 °C |                 |
| CMI-MPLD11088HS-R15M | 0.15                          | 1.4                     | 100                     | 75                       | 25              |
| CMI-MPLD11088HS-R22M | 0.22                          | 1.4                     | 80                      | 60                       | 25              |
| CMI-MPLD11088HS-R33M | 0.33                          | 1.4                     | 60                      | 45                       | 25              |
| CMI-MPLD11088HS-R47M | 0.47                          | 1.4                     | 40                      | 30                       | 25              |
| CMI-MPLD11088HS-R68M | 0.68                          | 1.4                     | 35                      | 27                       | 25              |
| CMI-MPLD11088HS-1R0M | 1.0                           | 1.4                     | 25                      | 17.5                     | 25              |
| CMI-MPLD11088HS-1R2M | 1.2                           | 1.4                     | 21                      | 15.5                     | 25              |
|                      |                               |                         |                         |                          |                 |
|                      |                               |                         |                         |                          |                 |
|                      |                               |                         |                         |                          |                 |

- Test Frequency: 100kHz, 25 °c
- Isat: When based on the inductance change rate (approximately 30% below in the initial value)
- Irms: When based on the temperature increase (Temperature increase of approximately 40°C by self heating)
- Operating Temperature Range(including self temperature) : -40°C ~ +125 °c

Note 1 : Circuit design, component placement, PCB trace size and thickness, airflow and other cooling. Provision all affect the part Temperature. Part temperature should be verified in the end application.

|                               |                   |                             |                 |
|-------------------------------|-------------------|-----------------------------|-----------------|
| Ilsan Sales Office (KOREA)    | +82)31-904-1444   | H.K Sales Office (HONGKONG) | +852)2711-5551  |
| Shenzhen Sales Office (CHINA) | +86)755-8663-6929 | LA Sales Office (USA)       | +1)866-446-3586 |
| Hungary Sales office (EUROPE) | +36)30-913-7706   |                             |                 |

▪ **You can also contact us by e-mail : [coilmaster@coilmaster.com](mailto:coilmaster@coilmaster.com)**

- All specifications are subject to change without notice.
- Update date : 2022.01.11

[www.coilmaster.com](http://www.coilmaster.com)