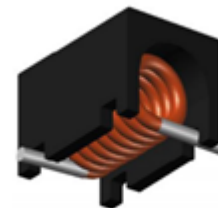


# CMI-SC0703-SERIES



## Features

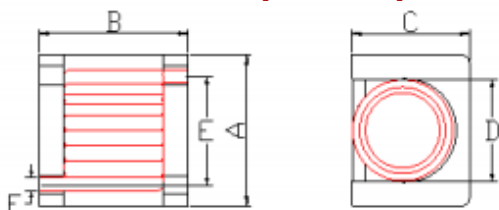
- ▶ Tinned leads assure reliable soldering
- ▶ Standard EIA tape and reel packing
- ▶ Forms a flat top making them suitable for automatic placement and reflow.
- ▶ RoHS compliant.
- ▶ Halogen Free.



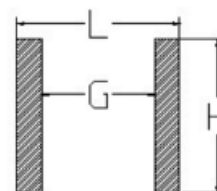
## Applications

- ▶ Satellite communication systems, equipment (TV, STB, audio, etc)

Dimension (Unit:mm)



Land Pattern (Unit:mm)



A	B	C	D	E	F
6.50±0.2	4.90±0.2	4.25±0.2	3.80±0.2	4.60±0.2	0.32±0.05

I	J	K
5.30	4.00	5.00

## Specifications

Part Number	Inductance (nH) ±10%	DCR (mohm) Max.	SRF(MHz) Min.	Rated DC Current(A) Max.
CMI-SC0703-271K	270	39.5	500	3.6

- Rated DC Current : current that cause a 20 °c temperature rise form 25 °c ambient.
- Operating Temperature Range(including self temperature) : -40°c ~ +125 °c

Ilisan Sales Office (KOREA) +82)31-904-1444      H.K Sales Office (HONGKONG) +852)2711-5551  
 Shenzhen Sales Office (CHINA) +86)755-8663-6929      LA Sales Office (USA) +1)866-446-3586  
 Hungary Sales office (EUROPE) +36)30-913-7706

▪ You can also contact us by e-mail : [coilmaster@coilmaster.com](mailto:coilmaster@coilmaster.com)

- All specifications are subject to change without notice.
- Update date : 2016.06.13